

SYSTEMATIC QUALITY

Product Overview

CATALOGUE



Power distribution

Wall-mounted distributors
Mobile distributors
Transformers
Cable reels

Seiten 4 - 7

Wall-mounted distributors



Seite 4

Mobile distributors



Seite 5

Transformers



Seite 6

Cable reels



Seite 7

Underfloor distributors
Floor outlets
Cables
Cable protectors

Seiten 8 - 11

Underfloor distributors



Seite 8

Floor outlets



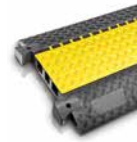
Seite 9

Cables



Seite 10

Cable protectors



Seite 11

Lighting

Technical lighting

Seiten 12 - 13

LED Street lighting



Seite 12

Hand-/ work-station lights



Seiten 12 - 13

Protected tube lights



Seite 13

Work lights



Seite 13

LED Spotlights



Seite 13

Energy columns
Products for the Ex-area

Seiten 14 - 15

Energy Columns



Seite 14

Products for the Ex-area



Seite 15



Quality, you can depend on

GIFAS implements your needs and requirements, from planning and consulting to development and design through to documentation and project configuration. In doing so, our top priorities are ensuring customer satisfaction as well as the safety and compliance of our products with existing regulations.

Our markets, our customers

When it comes to electrical products that reliably fulfil their function even under the toughest conditions, GIFAS has been the right partner for industry, commerce, crafts, architects and the construction sector since 1957.

Our qualified field and office sales team serves customers in Germany and throughout Europe.

Success factor: Employees

The 250 employees of the GIFAS Group throughout Europe do everything they can to ensure rapid and competent implementation of your needs. We are committed to tackling the challenges of the market and develop flexible solutions for the required application.

Our philosophy

The name GIFAS stands for the highest level of quality. To guarantee this in the long term, our company is certified and structured according to DIN EN ISO 9001:2008. At the same time, we have introduced an environmental management system and are certified according to DIN EN ISO 14001:2009. We guarantee safe and reliable products!

A strict quality policy is an elementary part of the GIFAS corporate strategy. The integration and continuous communication within the GIFAS Group leads to new product innovations that benefit our customers throughout Europe.

That's why we are the right choice:

High-quality electrical products offering certified quality for even the harshest conditions

One-stop shop: planning, development, design, production, documentation, project management

Customer-specific, expert advice, including on site

Tried-and-tested, varied product range

Tailor-made solutions

Production of individual and large series



Product properties

Our solid rubber distributors offer all the advantages of rubber plus

- All external metal parts made from rust-proof material
- Solid rubber sockets with nickel-plated contact sleeves
- Fuse elements protected with special shock-resistant cover
- SS screws set in rust-proof brass press-fit bushings with dual anchor
- Wired ready for connection
- Supply lines for GIFAS-PROFLEX-07 cables
- Maintenance-friendly structure since all parts can be exchange individually
- Protection category to IP 65
- Self-extinguishing and flame-resistant in accordance with VDE 0471 part 2-2, DIN EN 60695-2-2 (glow wire test / needle flame test)
- Comply with all minimum standards requirements for equipment of Category 2 "K 2" (BGI / GUV-I 600 May 2012) and very suitable for areas with high thermal and mechanical effects (eg. construction sites)



Small distributors

Series 1400
78x290x91mm



Series 1800
184x92x52mm



Series 2500
110x79x110mm



Series 2516
160x250x90mm



Series 3800
250x360x132mm



Wall-mounted distributors

Series 7200
160x280x132mm



Series 7300
200x350x132mm



Series 7400
265x370x132mm



Series 7700
336x370x162mm



Series 7800
360x500x133mm



Series 7900
360x500x173mm



Wall-mounted distributor combinations



Further information about versions and configurations can be found in our main catalogue, chapter 01.

Product properties

- Our solid rubber distributors offer all the advantages of rubber plus
- All external metal parts made from rust-proof material
 - Solid rubber sockets with nickel-plated contact sleeves
 - Fuse elements protected with special shock-resistant cover
 - SS-screws set in rust-proof brass press-fit bushings with dual anchor
 - Wired ready for connection
 - Supply lines for GIFAS-PROFLEX-07 cables
 - Maintenance-friendly structure since all parts can be exchange individually
 - Protection category to IP 65
 - Self-extinguishing and flame-resistant in accordance with VDE 0471 part 2-2, DIN EN 60695-2-2 (glow wire test / needle flame test)
 - Comply with all minimum standards requirements for equipment of Category 2 "K 2" (BGI / GUV-I 600 May 2012) and very suitable for areas with high thermal and mechanical effects (eg. construction sites)



Small distributors / Adapters

Series 1400
290x78x91mm



Series 1800
184x92x52mm



Series 2000
130x115x130mm



Series 2516
250x160x90mm



Series 1616 Adapters
160x160x90mm



Industrial distributors

Series 3500
361x250x361mm



Series 6200
280x275x230mm



Series 6700
350x305x280mm



Series 7900
360x500x173mm



Series 7900 built-in in a protective aluminum frame



Moveable distributors / construction site power distributors / Inspection trolleys



Further information about versions and configurations can be found in our main catalogue, chapter 03.

Product properties

Our solid rubber distributors offer all the advantages of rubber plus

- Transformers compliant with VDE 0570 IEC 61558
- Safety-insulated housing compliant with VDE 0100 Part 410
- Sockets and plugs compliant with VDE 0623 DIN 49462/63 and EIC 309
- GS mark
- Compliance with regulations as per BVG A1, BVG A2, VDE 0100, Part 100
- Wrapped thermocouple can also be used for tangential fan control on request
- External screws made from non-rusting material and with a captive design
- Maintenance-friendly structures since all parts can be exchanged individually



Static safety transformers

Series 2516
160x250x90mm



Series 3800
250x360x133mm



Static isolating transformers

Series 3900
250x360x173mm



Series 7900
360x500x173mm



Mobile safety transformers

Series 6200
280x275x230mm



Series 3500
361x250x361mm



Mobile isolating transformers

Series 2516
160x250x90mm



Series 3900
250x360x173mm



Isolating safety transformers / moveable transformers / inspection trolleys



Further information about versions and configurations can be found in our main catalogue, chapter 04.

Solid rubber cable reels

Product properties

- Solid, halogen-free solid rubber reel bodies, full protective insulation
- Stable steel tube frame, zinc-plated and black powder-coated
- GIFAS PROFLEX H07 cable
- High mechanical stability
- UV and weather resistant
- Impact-resistant, ageing-resistant and maintenance-free
- Ergonomic shape, good carrying comfort
- With thermal overload protection
- Internal wedge brake
- With insulating handle coating (BGI 608)
- Built in accordance with VDE 0620 Part 300
- K2-identification



Series 501
with PRCD-S



Series 502
300x410x230mm
with PRCD-S



Series 503
340x480x430, optional can
be driven over by transport
trolleys



Sheet steel cable reels

Series 504
440x572x360mm



Series 521
720x1130x775mm, optional
with solid rubber distributor



Plastic cable reels

Product properties

- Robust reel bodies from polycarbonate black, fully protective-in isolation
- High mechanical stability
- UV and weather resistant
- Impact-resistant, ageing-resistant
- With overheating protection
- With central drum brake
- K2-identification

Series 511K2
280x352x240mm



Series 512K2
338x409x254mm



Hose reels

Series 810
Hose length 9m
Pressure 15bar



Series 8000
Hose length 20m
Pressure 20bar



Pull-out cable reels

Series 520 Mini
Pull-out length 5 to 7m



Series 520 PRC
Pull-out length 8 to 24m



Further information about versions and configurations can be found in our main catalogue, chapter 06.

Product properties

- Sturdy, easy to use and safe in operation
- Can be walked or driven over even during operation
- Solid stainless steel construct, resistant to environmental influences
- Secured against unauthorised opening (vandal-proof) and lockable

Product properties of CAMPETTO / PIAZZA

- Fitting with solid rubber distributors: water, compressed air, data and telephone combinations as per clients wishes
- The GIFAS solid rubber distributor guarantees optimum operating safety down to -40°C
- Cover is made of stainless steel non-slip, steel floor plate or can be individually filled / paved. A perfect adaption of the environment is possible
- Frost-proof operation is possible thanks to cover heating
- Easy and quick opening and closing supported by gas springs
- No formation of condensation
- Flooding-resistant on request



PICCOLINO 120
120x120x400mm
Classification 2kN (200kg)



PICCOLINO 200
200x200x400mm
Classification C250/ 250kN (25t)



RETRANT
340x240x420mm
Classification A15/ 15kN (1,5t)



CAMPETTO V
628x435x500mm/ 778x535x670mm
Maximum load 30kN (3t)
Classification A15/ 15kN



CAMPETTO VI
628x435x500mm/ 778x535x670mm
Maximum load 125kN (12,5t)
Classification B125/ 125kN



CAMPETTO VII
880x992x1000mm
Maximum load 30kN (3t)
Classification A15/ 15kN



CAMPETTO VIII
880x992x1000mm
Maximum load 125kN (12,5t)
Classification B125/ 125kN



PIAZZA 580
580x580x1200mm
Classification D400/ 400kN (40t)



PIAZZA 700
700x700x1300mm
Classification D400/ 400kN (40t)



PIAZZA 1000
1000x1000x1300mm
Classification D400/ 400kN (40t)



Further information about versions and configurations can be found in our main catalogue, chapter 02.

Product properties FONTO/MASSO

- Floor outlets made of aluminium
- All models can be travelled over
- Depending on the model: can even be used on floors that require wet cleaning, where there is splashing water and outdoors
- Well-designed and robust
- Available in different sizes
- Different applications: congress halls and event spaces, hotel and gastronomy, company buildings, industrial areas, outdoor facilities etc.
- On request individually tailored
- Maximum static load according to EN 50085



FONTO 2290
113x97mm
Classification 20kN



FONTO 3290
119x119mm
Classification 20kN



FONTO 3301
119x119mm
Classification 20kN



FONTO 1970W
119x119mm
Classification 40kN



MASSO H22B
220x170mm
Classification 40kN



MASSO H32B
260x210mm
Classification 40kN



MASSO 1980B
170x170mm
Classification 40kN



MASSO H25B
170x170mm
Classification 40kN



Floor systems (Indoor)

PIANO 8802-Tnw
125x125x75mm
1x Schuko, 1x RJ 45 double



PIANO 8803-B
220x150x70mm
3x Schuko



PIANO 9901-A
120x72mm
1x Schuko



PIANO 9904-Anw
200x80mm
2x Schuko, 2x RJ 45 double



PIANO 7702-E
170x122mm
2x Schuko



PIANO 8808-B
240x240x62mm
8x Schuko



PIANO 2008-Anw
250x250x90mm
4x Schuko, 4x RJ 45 double



PIANO 9913-Tnw
380x112mm
1x CEE 5/16A, 2x Schuko,
1x RJ 45 double



Further information about versions and configurations can be found in our main catalogue, chapter 02B.

Product properties

- Conductor identification compliant with DIN VDE 0293
- Also available as equipment connection cables with vulcanised contour plug, protective contact plug or moulded CEE plug
- The cables can optionally be printed with your company name



Legende

N	Name
C	Cable type
V	Operating voltage U ₀ /U
T _m	Temperature range mobile
T _f	Temperature range fixed
T _c	Temperature range constant
T _s	Temperature range short-term

Cables

N LEUCHTFLEX
C H05 VV-F
V 300/500
T_m -15°C to +70°C
T_f -30°C to +70°C

N EXTREMFLEX PUR
C H05 BQ-F, H07 BQ-F
V 300/500 (H05)
450/750 (H07)
T_m -25°C to +80°C
T_f -40°C to +90°C

N PROFLEXX H07
C H07 RN-F
V 450/750
T_m -25°C to +60°C
T_f -40°C to +60°C
T_s to +250°C

N THERMFLEX
C (N) HXSLHXÖ-J
V 300/500
T_m -25°C to +100°C
T_f -40°C to +100°C

N EXTREMTHERM
V 600
T_c -190°C to +260°C
T_s to +300°C



Device connecting cables / extensions

N LEUCHTFLEX
C H05 VV-F
contour plug on 2-/
protective contact plug
on 3-wire cable

N EXTREMFLEX PUR
C H05 BQ-F, H07 BQ-F
contour plug on 2-/
protective contact plug
on 3-wire cable

N PROFLEXX H07
C H07 RN-F
contour plug on 2-/
protective contact or CEE
plug on 3-wire cable

Verlängerung
N PROFLEXX H07
C H07 RN-F
V 230/400/500
with moulded-on plug
connectors

N PROFLEXX H07
mit PRCD-S
V 230
T_c -25°C to +40°C
Protection category IP55



Further information about versions, cross sections and lengths can be found in our main catalogue, chapter 05.

Product properties

- For electricity, gas, water, compressed air and hydraulic lines
- Non-slip, temperature-resistant, weathering-resistant, wear-resistant
- Resistant to solvents, petrol, oil, acid and de-icing salt
- Extensions possible with moulded-on or mounted tenons
- Structured non-slip surface
- Self-cleaning locking hinge
- DEKRA-certified - tested product safety

Technical data

Material in lower section: black polyurethane
 Material in upper section: polyethylene in yellow signal colour
 Fire safety class: B2 (compliant with DIN 4102)
 Working range: -30°C to +60°C
 Hardness range: 88 Shore ± 4A.



SLIM

1000x280x32mm, 4,4kg
 max. load 2t/400mm²
 channels 6, width 18-19mm, height 17mm



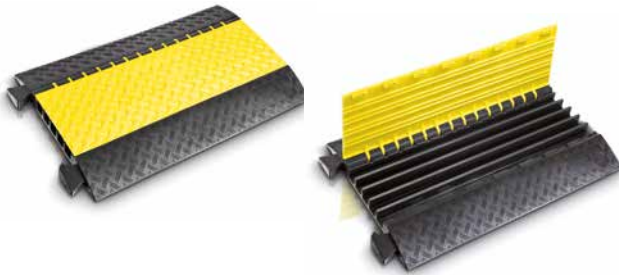
SMART

1000x290x48mm, 5kg
 max. load 2t/400mm²
 channels 3, width 35mm, height 30/35/30mm



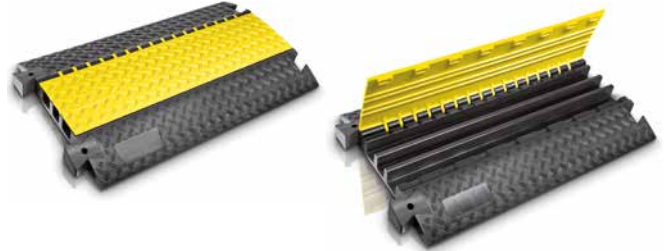
MIDI

890x542x52mm, 11,5kg
 max. load 5t/400mm²
 channels 5, width 34mm, height 36mm



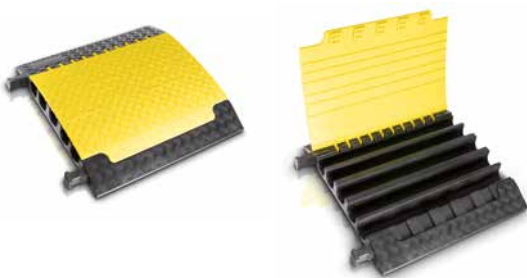
PROTECT

1000x600x73mm, 22kg
 max. load 5t/400mm²
 channels 3, width 52/45/56mm, height 49/50/49mm



MAXIMA

700x696x87mm, 21,4kg
 max. load 6t/400mm²
 channels 5, width 61/62/60/62/61mm, height 59/65/63/65/59mm



MEGA

700x783x139mm, 30,5kg
 max. load 6t/400mm²
 channels 2+2, width 35/120/120/35mm, height 50/115/115/50mm



Further information can be found in our main catalogue, chapter 05.

LED lighting

Product properties

The industrial, working, workstation and street lights combine all of the advantages of LED technology.

- Long service life
- Low energy consumption
- Low heat development
- Long lighting performance
- No maintenance costs
- No sudden failure
- No toxic substances, no mercury
- Precise light direction
- Wide variety of colours and types
- Low CO2 emissions
- Insensitive to shock and vibration
- No hollow body that can implode
- No UV or IR (thermal) radiation
- No insect attacks



LED street lighting

StreetLED2 30

30LEDs, 3900lm, IP66
Height of light spot 5-7m
Street category P3/M5
430x310mm, 3,8kg

StreetLED2 90

90LEDs, 12900lm, IP66
Height of light spot 7-12m
Street category M3
720x465mm, 8,5kg

StreetLED CUBE 24

24LEDs, 4000lm, IP66
Height of light spot 5-7m
Street category P3/M5
424x275x82,5mm, 4,25kg

StreetLED CUBE 72

72LEDs, 12000lm, IP66
Height of light spot 7-12m
Street category M3
594x275x82,5mm, 6,45kg

StreetLED CUBE S48

48LEDs, 8000lm, IP66
Height of light spot 7-12m
Street category M4
566x275x171mm, 6,35kg



Hand lamps

FlashLED

230VAC, 12/24VDC
Li-ion rechargeable battery, 5x3W
PowerLED white, light duration max. 9h
IP65, 260x92,5x125mm, 1120g

WorkLED FLEX

Li-ion rechargeable battery
3W COB LED, light duration max.
4h, IP54, Flex 45+90 degrees
280x48x40mm, 300g

I-LED with ground magnetic

Li-ion rechargeable battery, 5x3W
900lm, IP65, light duration
100% 5h, 60% 9h,
231x115x100mm, 850g

TorchLED

battery- or rechargeable battery
LED's 2x white/2x red/2x green, also
with emergency light function, IP54
67,8x115,5x34mm, 230g



LED Torch S1

battery 4xAAAA/1.5V, light
duration 30h, light output 230lm
IP65, L 139mm, 133g

911 LED

230/42/24VAC
mains connection, 6x2W LED
1400lm, IP54, 1200g

917

230/42/24V, mains connection
42/24V max. 50W, 230V max.
60W, IP20, 600g

StabiLED

230VAC, 42/24VAC/DC, mains
connection, 6x1W PowerLED,
2600lm, IP55, Ø60x500mm, 250g



Further information about our street lighting can be found in our main catalogue, chapter 08.
Further information about our technical lighting can be found in our main catalogue, chapter 09.

Workstation lights

MasterLED
24VAC/DC or 230VAC
1x20W LED
1500lm, IP65



SpotLED Flex
12-30VDC or 230VAC,
24VDC, 5x3W PowerLED
IP54, 500g



Protected tube light

StreamLED SL50
230VAC
makrolon, T8 LED tube
IP68, Ø54mm



StreamLIGHT SL 70
12/24VDC, 24/42/230VAC
Rod-shaped / Compact
makrolon / borosilicate glass
IP68, Ø70mm



Work light

ApolloLIGHT
230VAC
options 8x80W/4x80W
700m² maximum
illumination area
52000lm, IP44
Ø205x900mm, 8,2kg



ApolloLED
230V
options 8x80W/4x80W
700m² maximum
illumination area44000lm,
IP44
Ø208x900mm, 11kg



PrimaLED
230VAC, 24/42V AC/DC
mains connection
60x0,5W LED, 120lm/W
IP54 with socket
IP65 without socket
305x295x110mm, 3,1kg



MULTI
230/42/24VAC
mains connection
72W, 2x2800lm
IP54 with socket
IP65 without socket
305x295x170mm, 4,1kg



NovaLIGHT
230VAC, 42/24V
mains connection
4x36W, 11000lm, IP54
330x490x125mm, 5,2kg



NovaLED
90-300VAC, 130-430VDC
mains connection
120lm/W, 7200lm, IP54
330x490x125mm, 4,5kg



LED spotlight

SpotLED 24
12-30VDC or or through
230VAC, 24VDC
5x3W PowerLED, IP66
108x67x82mm, 350g



SpotLED 230
230VAC
8x3W PowerLED
IP66
170x89x105mm, 1000g



AlphaLUXX 25-60
100-277VAC (50/60Hz)
289x176x85,5mm, 2,7kg
25W: 3550lm
40W: 5500lm
60W: 7800lm



AlphaLUXX 80-120
100-277VAC (50/60Hz)
389x252x106,5mm, 7kg
80W: 12800lm
100W: 16500lm
120W: 18700lm



DeltaLUXX
100-277VAC (50/60Hz)
150-240W, 22.000-32.000lm
Various directional
characteristics
D450xH150, 9,2-9,7kg



FlutLED 9530.B/ 9530.E
200W, 230VAC
> 80 lm/W, IP65,
Ø529x319mm
15,9kg



Further information about our technical lighting can be found in our main catalogue, chapter 09.
Further information about our indoor lighting can be found in our main catalogue, chapter 09B.

Aluminium power columns

Product properties

- Suitable for indoor and outdoor use
- Closed aluminium profile
- Sturdy design, excellent stability
- Corrosion-free
- Surface impervious to dirt
- Ceiling connection variant for vertical connection technology
- Possible connection combinations with electricity, water, compressed air, video, audio and data as per clients wishes
- Can be equipped up to a height of 6m
- IP20 no protection against moisture
- IP54 splashproof with corresponding built-in elements



GAS 160

Closed aluminum profile
160x110mm, length up to 6m
equipment on all four sides
Customer-specific equipment



Charging column for electromobility

Closed steel profile
111x300mm, length 1600 mm
1 charging point, connector type2
loading capacity up to 22kW / 32A 3phase



Power bollards

Product properties

- Customised distributor equipment (solid rubber distributor) as per the customer's wishes, technical specifications and requirements
- Securing material installed under impact-resistant Macrolon cover
- Excellent operating safety and protection against unauthorised access and vandalism
- Sturdy stainless steel construct
- Protection category IP54
IP65 with closed cable feed

Rondo 200

Ø204x1200mm, 25kg
Customer-specific equipment
with GIFAS solid rubber distributors



Rondo 300

Ø304x1200mm, 45kg
Customer-specific equipment
with GIFAS solid rubber distributors



NORDSEE

500x1500x450mm, 120kg
Equipment as per customer wish
with GIFAS solid rubber distributors



Further information about versions and configurations can be found in our main catalogue, chapter 10.


Anywhere that flammable gases, vapours or dusts occur which mix with air or oxygen is at risk of explosion. This does not just relate to plants in the chemical industry and mining, but even bottling plants for high-percentage spirits or a grain silo can represent a potential source of explosion. Any unwanted explosion endangers the health and lives of anyone located nearby and is very likely to lead to serious material damage.

All EX-equipment must bear a label from which the user can identify the explosive environments for which the equipment is suitable.

This «ATEX» directive regulates the approval of explosive equipment and makes demands on the quality management systems used by manufacturers of explosive equipment.

All GIFAS products are made and approved in accordance to «ATEX».



-Cable reels

Series 502 (Stahl)
EX II 2 G CE 0102
EEx de IIC, IIB, T6
IP54, Zones 1 + 2
300x410x230mm, 13kg



Series 502 (CEAG)
EX II 2 G, CE 0102
EEx de IIC, T6
IP54, Zones 1 + 2
300x410x230mm, 13/18kg



Series 518
EX II 2 G EEx de IIA T6
EEx de IIA T6
IP65, Zones 1 + 2
554x380x310mm, 24/30kg



-Lights

Ex-strip luminaire lights 35W/56W
EX II 2 G Ex d eb IIB T6 Gb
EX II 2 D Ex tb IIIC T80°C Db
Zones 1, 2, 21, 22
36W: 1360x850x600mm 6,4kg
56W: 1360x850x900mm 8,7kg



FlutLED-Ex LED floodlight
120W/150W
EX II 2 G - Ex d e IIB T5 Gb
EX II 2 D - Ex t IIIC T95°C Db
Zones 1, 2, 21, 22, 426x187mm,
Ø410mm, 13,5kg



FlutLED-Ex battery 10W
Ex d IIC T6 Gb
Ex tb IIIC T80°C Db
Zones 1, 2, 21, und 22
210x182x282mm, 5,3kg



FlashLED-Ex Rechargeable
battery light
EX II 2G Ex ib IIC T4 Gb
EX II 2D Ex ib IIIC T135°C Db
5x1,6W Power LED weiss
IP65, Zones 1, 2, 21, 22
260x125x93mm, 1400g



TorchLED-Ex Torch
EX II 2 G Ex ib IIC T4 Gb
EX II 2 D Ex ib IIIC T140°C Db
IP54, Zones 1, 2, 21 und 22
87x82x44mm, 80g



PARALUX PX0 Hand-held lights
EX II 1G Ex ia IIC T4 Ga
EX II 2D Ex ib IIIC T105°C Db
3W CREE LED, Zones 0/21
Light range 150m
38x167mm, 170g



HEADS UP LITE 2755Z0 LED
Battery head and helmet light
EX II 1 G Ex ia IIC T4 Ga
TRAC13ATEX0035X
Zones 0, 57mm, 100g



Further information about versions and configurations can be found in our main catalogue, chapter 11.

CONTACT US TODAY

New products and specialist solutions, along with the latest product catalogue, can be found on our website:

www.gifas.de



GIFAS
ELECTRIC

GIFAS ELECTRIC GmbH
Borsigstrasse 9
41469 Neuss
GERMANY

+49 2137 105-0
+49 2137 105-230
verkauf@gifas.de
www.gifas.de

Technical modifications reserved 09/2017