



### **UNSEEN BUT ALWAYS READY.**

GIFAS underfloor distributors harmoniously integrate supply technology for electricity, water, sewage, compressed air and media. They are space-saving and ready-to-use on request in your vicinity - they are quick to start and highly resilient without being seen.

|                  |    |
|------------------|----|
| General          | 74 |
| PIAZZA           | 80 |
| CAMPETTO         | 84 |
| RETRANT          | 88 |
| PICCOLINO        | 89 |
| Use cases        | 90 |
| 3D Visualisation | 99 |



Thanks to underfloor distributors from GIFAS ELECTRIC, electrical power is quickly available anywhere and without time-consuming installation work! Power, media and water distributors integrated invisibly into the cityscape, designed with long service and ease of maintenance in mind.

Over the following pages, you will see a synopsis of the advantages of our high-quality components and materials, and how we can help you, step by step, towards a future-proof underfloor distributor system that meets your individual preferences and requirements. We also pay close attention to reliability and product quality. "MADE in GERMANY".

To offer you the right product for every application, GIFAS has a number of different underfloor distributor systems of varying function, size and application in its portfolio.

One characteristic shared by all of the products is the uniqueness and knowledge of how to offer our customers tailored, VDE-compliant products that are virtually impossible to vandalise, remain fully capable of being walked or driven on during operation and which integrate seamlessly into the landscape.



**100% Made in Germany**  
**100% Made by GIFAS**

## Classification and areas of application

### Classification

| DIN EN 124      | A15 | B125 | C250 | D400 | F900 |
|-----------------|-----|------|------|------|------|
| Test load in kN | 15  | 125  | 250  | 400  | 900  |
| Test load in t  | 1.5 | 12.5 | 25   | 40   | 90   |

### Areas of application

|                         |   |   |   |   |   |
|-------------------------|---|---|---|---|---|
| Private sector          | x |   |   |   |   |
| Pedestrian precincts    | x | x | x | x |   |
| Parking spaces          |   | x | x | x |   |
| Marketplaces            |   | x | x | x |   |
| Industrial applications |   | x | x | x | x |
| Airports                |   |   |   | x | x |

Properties



**Body and cover**

The body of the underfloor distributor is made from stainless steel up to 6 mm thick, which is impervious to seismic movement, moisture, rodents and other environmental influences. The cover is also made from 6 mm stainless steel and can be designed to withstand the F900 weight class.



**Solid rubber**

All solid rubber distributors from GIFAS ELECTRIC are made from 100% vulcanised, self-extinguishing butyl rubber (Shore hardness 97), compliant with VDE 0471 Part 2.2. They are resistant to oils, various acids and alkalis, and are impervious to weld and spark showers. The solid rubber distributors we use mean that condensation build-up in the distributor caused by temperature fluctuations can be reliably ruled out.



**C-SAFE (at customer's request)**

The cable outlet guard is designed so that its flat and rounded construction presents no obstacle, trip hazard or sharp edges. The underfloor distributor system can be walked on or driven over without limit during operation, with supply lines being fully protected.



**Gas springs**

Gas springs assist with the opening and closing of the underfloor distributor system. They are not susceptible to faults, similar to those that are installed in the boot of your car.



**Load classes**

GIFAS underfloor distributor systems offer you the following types according to the DIN 124 load classes: A15 (pedestrian walkways and cycle lanes), B125 (truck and parking spaces), D400 (heavy goods vehicles) and F900 (airports and production halls with forklift truck traffic).



**Substructures**

These are designed so that you can choose underfloor distributor systems suitable for your cable depths. From TYPE 86-2 concrete shafts (telecoms shafts) with a steel body to DIN 4034-2 concrete rings, we offer you everything from depths of 50 cm to 2 m. Custom depths are also possible.



**Ready-to-connect delivery**

The underfloor distributor systems are supplied ready for connection and can be hooked up easily and effortlessly to the existing power network by an electrician.



**Submersible bell (at customer's request)**

In areas prone to flooding, underfloor distributors can be equipped with a submersible bell. The principle is similar to an inverted glass in a bowl filled with water. A bell of air forms around the solid rubber distributor, protecting the components from moisture.



## Model overview

### PIAZZA

| Technical data                   | PIAZZA 580                                | PIAZZA 700                                | PIAZZA 1000                               | PIAZZA 2000                                 |
|----------------------------------|---|---|---|---|
| Area of use                      | Internal / external area                  | Internal / external area                  | Internal / external area                  | Internal / external area                    |
| Classification as per DIN EN 124 | 400kN (40t) / D400                        | 400kN (40t) / D400                        | 400kN (40t) / D400                        | 900kN (90t) / F900                          |
| Cover achievement                | Covers can be individually filled / paved | Covers can be individually filled / paved | Covers can be individually filled / paved | Covers can be individually filled / paved   |
| Cover measurements               | 580x550x70mm                              | 700x700x70mm                              | 1000x1000x70mm                            | 700x700x70mm                                |
| Cover heating                    | Yes                                       | Yes                                       | Yes                                       | Optional                                    |
| Submersible bell                 | Optional                                  | Optional                                  | Optional                                  | Optional                                    |
| Weight                           | Approx. 350kg                             | Approx. 450kg                             | Approx. 780kg                             | Approx. 280 kg (without concrete ring)      |
| Installation depth               | Approx. 1200mm                            | Approx. 1300mm                            | Approx. 1300mm                            | Approx. 310mm plus distributor and fittings |
| GIFAS solid rubber distributors  | 3800 series                               | 7800 series                               | 7800/7900 series                          | 7800 series                                 |

### CAMPETTO

| Technical data                   | CAMPETTO V   | CAMPETTO VI   | CAMPETTO VII                               | CAMPETTO VIII                             |
|----------------------------------|--|---|--|---|
| Area of use                      | Internal / external area   | Internal / external area  | Internal / external area                   | Internal / external area                  |
| Classification as per DIN EN 124 | 15kN (1.5t) / A15<br>Optional B125                                       | 125kN (12.5t) / B125  | 15kN (1.5t) / A15<br>Optional B125         | 125kN (12.5t) / B125                      |
| Cover achievement                | Stainless steel non-slip steel floor plate, can be supplied in two sizes | Covers can be individually filled / paved, can be supplied in two sizes | Stainless steel non-slip steel floor plate | Covers can be individually filled / paved |
| Cover measurements               | 628x435mm / 778x535mm  | 628x435mm / 778x535mm   | 880x992mm                                  | 880x992mm                                 |
| Cover heating                    | Optional   | Optional  | Optional                                   | Optional                                  |
| Submersible bell                 | Optional   | Optional  | Optional                                   | Optional                                  |
| Weight                           | Approx. 60kg   | Approx. 70kg  | Approx. 250kg                              | Approx. 250kg                             |
| Installation depth               | Depending on design<br>500 or 670mm                                      | Depending on design<br>500 or 670mm                                     | 1000mm                                     | 1000mm                                    |
| GIFAS solid rubber distributors  | 7200 - 7900 series   | 7200 - 7900 series  | 7200 - 7900 series                         | 7200 - 7900 series                        |

### RETRANT / PICCOLINO

| Technical data                   | RETRANT   | PICCOLINO 120   | PICCOLINO 200  |
|----------------------------------|---|---|--|
| Area of use                      | Underfloor distributors for restricted spaces   | Underfloor distributors for restricted spaces   | Underfloor distributors for restricted spaces  |
| Classification as per DIN EN 124 | 15kN (1.5t) / A15   | 2kN (200kg)   | 250kN (25t) / C250   |
| Cover                            | Stainless steel non-slip steel floor plate / 340x240mm  | Stainless steel non-slip steel floor plate / 120x120mm  | Stainless steel non-slip steel floor plate / 200x200mm   |
| Weight                           | Approx. 25kg  | Approx. 4.2kg   | Approx. 7.5kg  |
| Installation depth               | Approx. 420mm   | Approx. 400mm   | Approx. 400mm  |
| GIFAS solid rubber distributors  | Series 2516, protection category IP65<br>Equipment options<br>Individual as per the client's wishes | 2m H07 Leitung 3x2.5mm <sup>2</sup><br>1 protective contact coupling<br>16A/230V (IP 68) or<br>1 CEE coupling 16A/400V (IP67) | 2m H07 Leitung 3x2.5mm <sup>2</sup><br>1 protective contact coupling<br>16A/230V (IP 68) or<br>1 CEE coupling 5x16A/400V (IP 67) or<br>1 CEE coupling 5x32A/400V (IP 67) |

**Model overview**

**PIAZZA**

**Product features**

- Can be locked, walked on or driven over during operation
- Cover can be filled with surrounding material or designed as a floor plate
- Secured against unauthorised opening (vandal-proof!)
- Gas springs for force-free, assisted opening
- Frost-proof operation thanks to cover heating
- If required with submersible bell
- Maintenance-free GIFAS solid rubber distributor system guarantees optimum operating safety down to -40°C
- No formation of condensation thanks to the GIFAS solid rubber distributor
- Resistant to environmental influences
- Stainless steel construction, all metal parts made from V2A
- Visible reflectors on the opened cover system
- Distributor fastening on the underside of the cover
- The connector distributor can be accessed when installed (E-check - DGUVA3)
- Pit covers, locks and distributors can be replaced

**Locking system**



**CAMPETTO**

**Product features**

- Can be locked, walked on or driven over during operation
- Cover can be filled with surrounding material or designed as a floor plate
- Secured against unauthorised opening (vandal-proof!)
- Gas springs for force-free, assisted opening
- Frost-proof operation thanks to cover heating option
- If required with submersible bell
- Maintenance-free GIFAS solid rubber distributor system guarantees optimum operating safety down to -40°C
- No formation of condensation thanks to the GIFAS solid rubber distributor
- Resistant to environmental influences
- Stainless steel construction, all metal parts made from V2A
- Visible reflectors on the opened cover system
- Cover pit can be removed by loosening the screws for maintenance purposes
- Distributor fastening on the underside of the cover
- The connector distributor can be accessed when installed (E-check - DGUVA3)
- Pit covers, locks and distributors can be replaced

**Locking system**



**RETRANT / PICCOLINO**

!

**Product features**  
The features of the RETRANT and PICCOLINO models can be found on pages 88 and 89.

**RETRANT**

**Locking system**



**PICCOLINO**

**Locking system**



# General

## Installation and assembly procedure PIAZZA



Excavating the installation pit



Customer-side concrete ring



Insertion of the unit



Insertion of the entire unit into the prepared installation pit



Levelling of the whole unit



Decanting and concreting-in



Adaptation to the surroundings with filler material



Fully installed PIAZZA

**Underfloor systems involving fresh water**  
With underfloor systems involving fresh water, the terminal distributor must be hung on the side opposite the water tap!

Installation and assembly procedure CAMPETTO



Excavating the installation pit



Topping up the installation pit



Insertion of the unit



Filling



Decanting and concreting-in



Adaptation to the surroundings with filler material



Fully installed CAMPETTO



## PIAZZA 580 (D400)

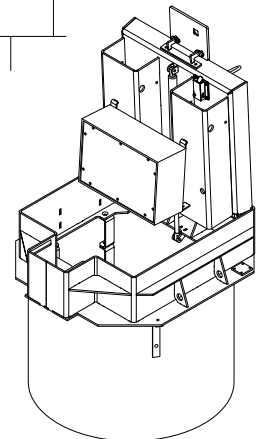
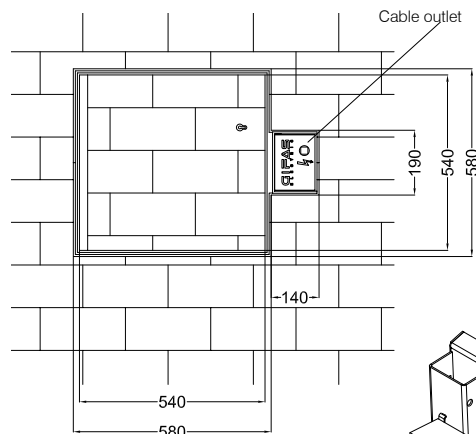
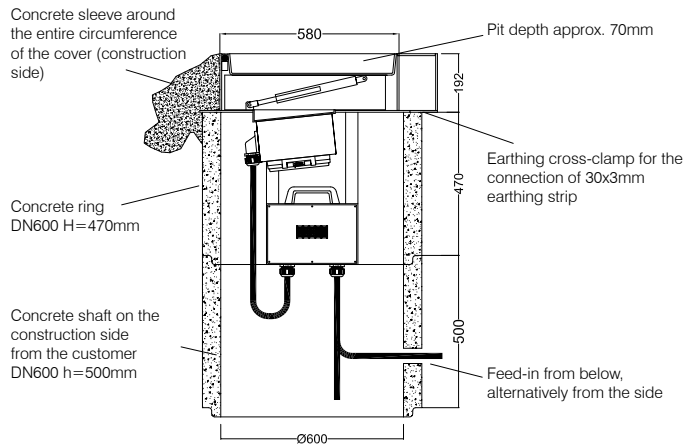


Solid stainless steel construction (V2A/1.4301) 580x580mm, load capacity up to 400kN, gas springs for fully automatic opening, shaft cover can be custom-filled, distributor as per the client's request.

### Technical additions

- Cover filling: The pit with a depth of 70mm can be custom-filled to blend in with its surroundings
- Cable exit flap: (180x130mm) integrated into the shaft cover frame
- Locking: A self-cleaning lock with snap fastener closes the shaft cover  
Cable exit flap secured with a double bit lock (locking tool included in the scope of delivery)
- Heating: To prevent the Floor Pit from being frozen in the closed position, a thermostatically controlled heating band is built into the lid of the Floor Pit housing.

**It is the client's responsibility to ensure the standards-appropriate substructure, correct installation of the shaft and corresponding drainage. The shaft cover is not sealed against surface water.**



PIAZZA 580  
3D view

### Supplied package

- Stainless steel construction with
  - fillable shaft cover
  - solid rubber electrical distributor
  - junction box
- Fully assembled and wired.
- Mounted on concrete ring (H=470mm, NW=600mm).



**PIAZZA 700 (D400)**



Solid stainless steel construction (V2A/1.4301) 700x700mm, load capacity up to 400kN, gas springs for fully automatic opening, shaft cover can be custom-filled, distributor as per the client's request.

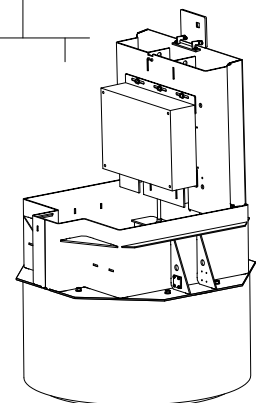
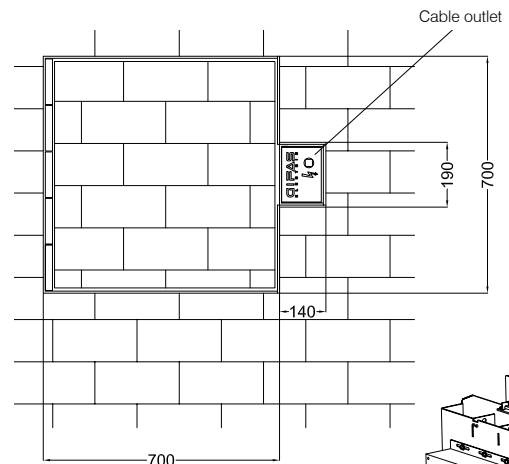
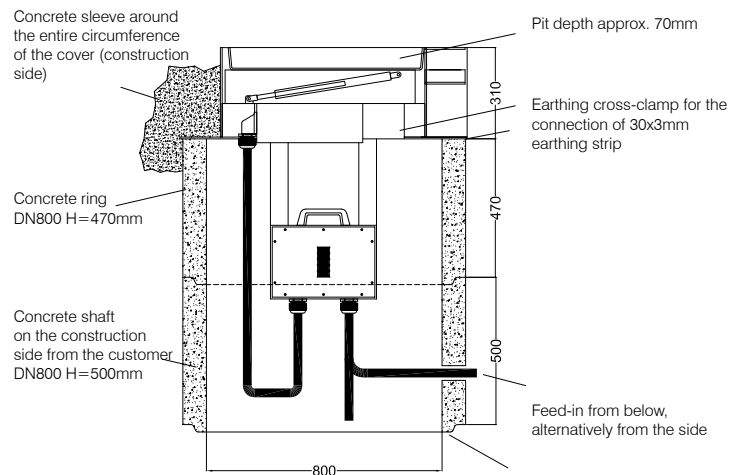
**Technical additions**

- Cover filling: The pit with a depth of 70mm can be custom-filled to blend in with its surroundings.
- Cable exit flap: (180x130mm) integrated into the shaft cover frame
- Locking: A sturdy closing mechanism (with snap lock) closes the shaft cover and it can also be secured with a shackle lock. Cable exit flap secured with a double bit lock (locking tool included in scope of delivery).
- Heating: To prevent the Floor Pit from being frozen in the closed position, a thermostatically controlled heating band is built into the lid of the Floor Pit housing.

**It is the client's responsibility to ensure the standards-appropriate substructure, correct installation of the shaft and corresponding drainage. The shaft cover is not sealed against surface water.**

**Supplied package**

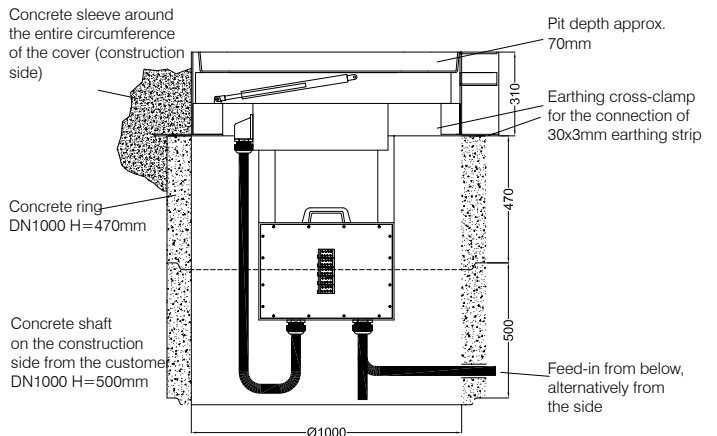
- Stainless steel construction with
  - fillable shaft cover
  - solid rubber electrical distributor
  - junction box
- Fully assembled and wired.
- Mounted on concrete ring (H=470mm, NW=800mm).



PIAZZA 700  
3D view



## PIAZZA 1000 (D400)

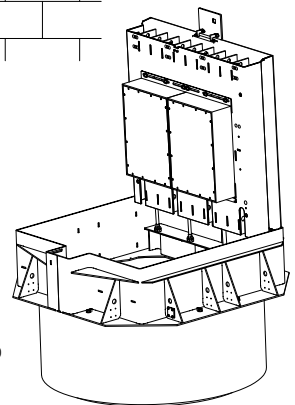
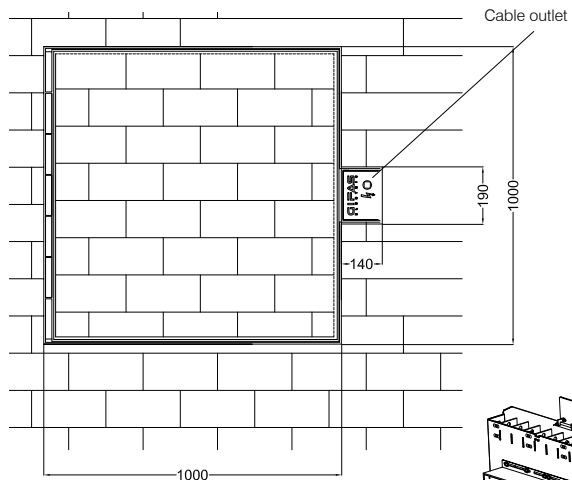


Solid stainless steel construction (V2A/1.4301) 1000x1000mm, load capacity up to 400kN, gas springs for fully automatic opening, shaft cover can be custom-filled, distributor as per the client's request.

### Technical additions

- Cover filling: The pit with a depth of 70mm can be custom-filled to blend in with its surroundings.
- Cable exit flap: (180x130mm) integrated into the shaft cover frame.
- Locking: A sturdy closing mechanism (with snap lock) closes the shaft cover and it can also be secured with a shackle lock. Cable exit flap secured with a double bit lock (locking tool included in scope of delivery).
- Heating: To prevent the Floor Pit from being frozen in the closed position, a thermostatically controlled heating band is built into the lid of the Floor Pit housing.

**It is the client's responsibility to ensure the standards-appropriate substructure, correct installation of the shaft and corresponding drainage. The shaft cover is not sealed against surface water.**



PIAZZA 1000  
3D view

### Supplied package

- Stainless steel construction with
  - fillable shaft cover
  - solid rubber electrical distributor
  - junction box
- Fully assembled and wired.
- Mounted on concrete ring (H=470mm, NW=1000mm).

**PIAZZA 2000 (F900)**



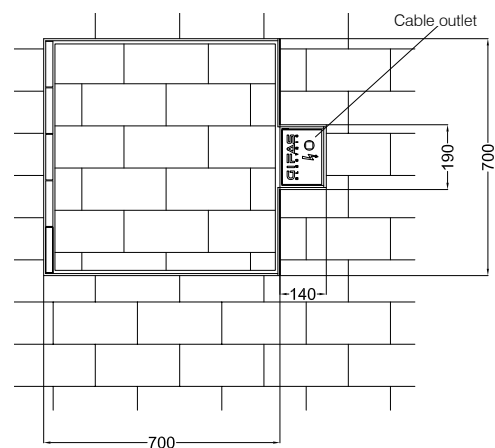
The GIFAS underfloor distributor PIAZZA 2000 has been specially designed for use at maintenance bases and in hangars.

Thanks to its strongly reinforced shaft cover, the PIAZZA 2000 can withstand the weight of an aircraft wheel, industrial lorry, tractor or pushback.

The main distributors are made of extremely sturdy solid rubber in Germany. They are extremely long-lasting.

We equip the main distributors according to your needs and ideas with any of the various connector types, jet connectors, fuse installations or controls. Load break switches or back-up fuses can be installed in the connection distributor.

Mounted on an underground substructure, the cover serves both as an opening and as a support for the power distribution.



**!**  
**Load classes F900**  
The PIAZZA 2000 has a static load capacity of 90 tons, e.g. aircraft wheel.



## CAMPETTO V (A15)



Solid stainless steel construction (V2A/1.4301) in two sizes, gas springs for fully automatic opening, shaft cover made from non-slip steel floor plate, distributor as per the client's request.

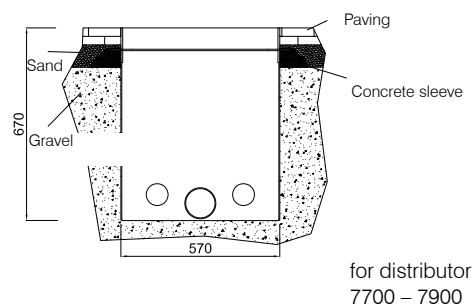
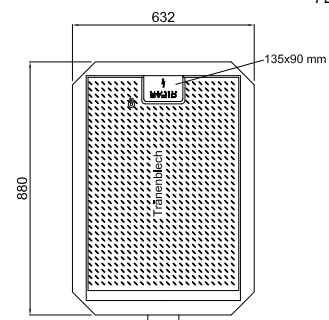
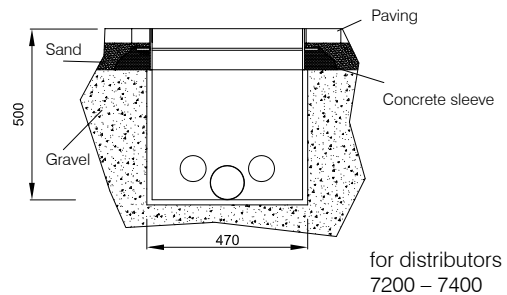
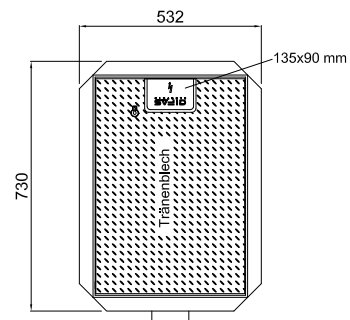
### Technical additions

- Cover: V2A/1.4301 non-slip steel floor plate
- Cable exit flap: (135x90mm) in the centre on the head side of the cover
- Locking: A self-cleaning lock with snap fastener closes the shaft cover (locking tool included in the scope of delivery).
- Heating (optional): To prevent the Floor Pit from being frozen in the closed position, a thermostatically controlled heating band is built into the lid of the Floor Pit housing.

It is the client's responsibility to ensure the standards-appropriate substructure, correct installation of the shaft and corresponding drainage. The shaft cover is not sealed against surface water.

### Supplied package

- Stainless steel construction with
- cover made from V2A non-slip steel floor plate
- solid rubber electrical distributor
- junction box
- Fully assembled and wired.



**CAMPETTO VI (B125)**



Solid stainless steel construction (V2A/1.4301) in two sizes, gas springs for fully automatic opening, shaft cover can be custom-filled, distributor as per the client's request.

**Technical additions**

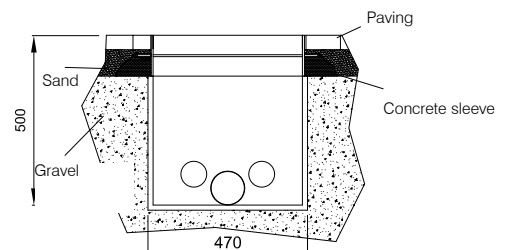
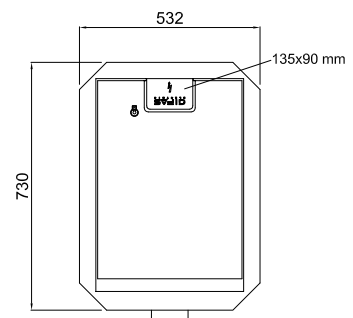
- Cover filling: The pit with a depth of 70mm can be custom-filled to blend in with its surroundings.
- Cable exit flap: (135x90mm) in the centre on the head side of the cover
- Locking: A self-cleaning lock with snap fastener closes the shaft cover (locking tool included in the scope of delivery).
- Heating (optional): To prevent the Floor Pit from being frozen in the closed position, a thermostatically controlled heating band is built into the lid of the Floor Pit housing.

It is the client's responsibility to ensure the standards-appropriate substructure, correct installation of the shaft and corresponding drainage. The shaft cover is not sealed against surface water.

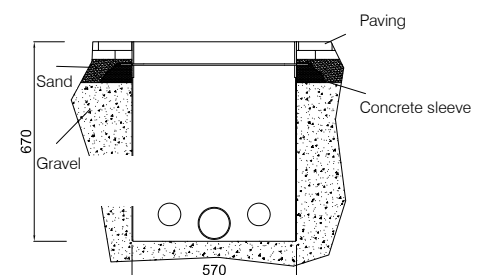
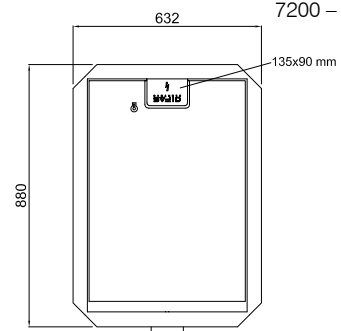
**Supplied package**

- Stainless steel construction with
  - fillable shaft cover
  - solid rubber electrical distributor
  - junction box
- Fully assembled and wired.

**!**  
**Cover**  
A covered version made of V2A non-slip steel floor plate is also available.



for distributors 7200 – 7400



for distributors 7700 – 7900



## CAMPETTO VII (A15)

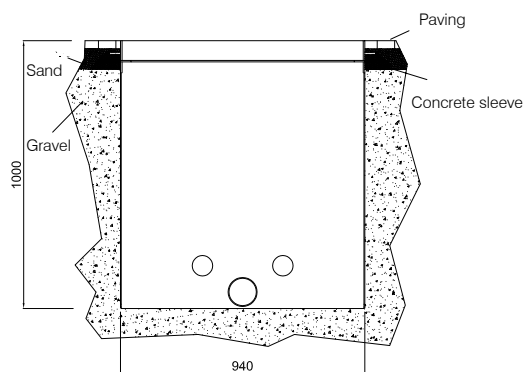
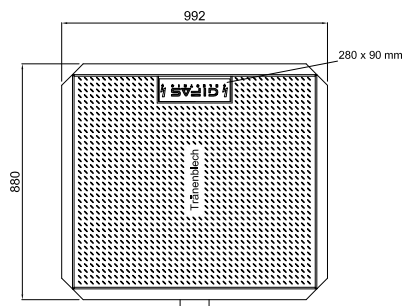


Solid stainless steel construction (V2A/1.4301), gas springs for fully automatic opening, shaft cover made from non-slip steel floor plate, distributor as per the client's request.

### Technical additions

- Cover: V2A/1.4301 non-slip steel floor plate.
- Cable exit flap: (135x90mm) in the centre on the head side of the cover
- Locking: A self-cleaning lock with snap fastener closes the shaft cover (locking tool included in the scope of delivery).
- Heating (optional): To prevent the Floor Pit from being frozen in the closed position, a thermostatically controlled heating band is built into the lid of the Floor Pit housing.

**It is the client's responsibility to ensure the standards-appropriate substructure, correct installation of the shaft and corresponding drainage. The shaft cover is not sealed against surface water.**



for distributors  
7200 – 7900

### Supplied package

- Stainless steel construction with
  - cover made from V2A/1.4301 non-slip steel floor plate
  - solid rubber electrical distributor
  - junction box
- Fully assembled and wired.

**CAMPETTO VIII (B125)**

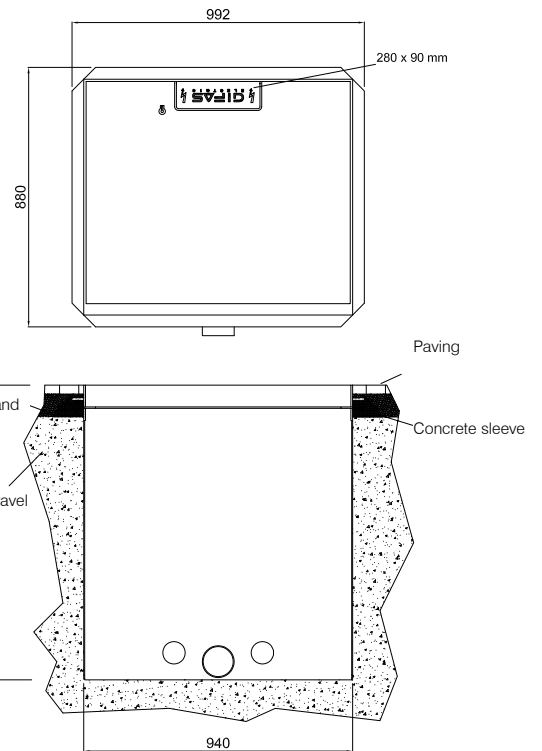


Solid stainless steel construction (V2A/1.4301), gas springs for fully automatic opening, shaft cover can be custom-filled, distributor as per the client's request.

**Technical additions**

- Cover filling: The pit with a depth of 70mm can be custom-filled to blend in with its surroundings.
- Cable exit flap: (280x90mm) in the centre on the head side of the cover
- Locking: A self-cleaning lock with snap fastener closes the shaft cover (locking tool included in the scope of delivery).
- Heating (optional): To prevent the Floor Pit from being frozen in the closed position, a thermostatically controlled heating band is built into the lid of the Floor Pit housing.

**It is the client's responsibility to ensure the standards-appropriate substructure, correct installation of the shaft and corresponding drainage. The shaft cover is not sealed against surface water.**



for distributors 7200 – 7900

**Supplied package**

- Stainless steel construction with
  - fillable shaft cover
  - solid rubber electrical distributor
  - junction box
- Fully assembled and wired.

# RETRANT



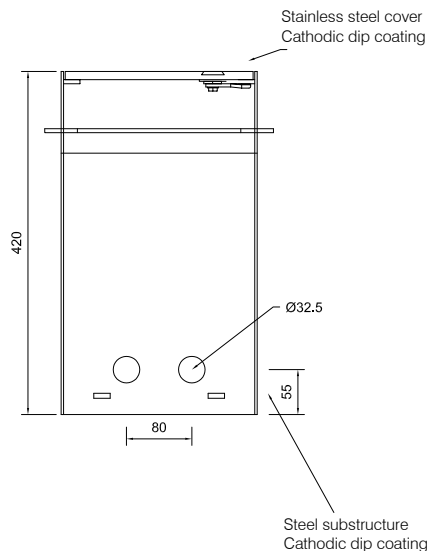
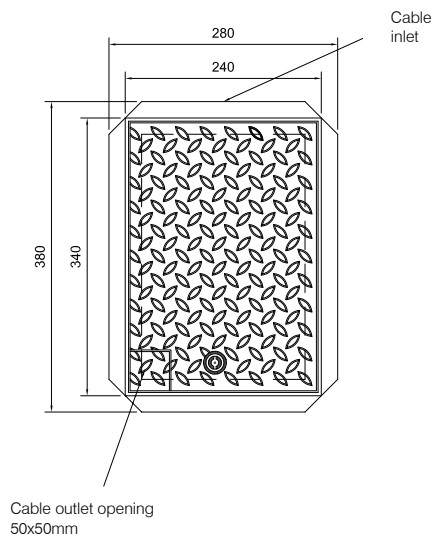
## RETRANT (A15)



### Product features

- Solid stainless steel construction, rust-free
- Completely maintenance-free (E-check)
- Cover made from non-slip steel floor plate
- Easy operation
- Can be walked on or driven over during operation
- Ground-flush installation
- Excellent safety thanks to the GIFAS double pressure method; the cover is held securely closed even without a lock
- Locking is performed using a countersunk, cover-flush dual bit lock (1 key included in the scope of delivery)
- Cable exit for cables is located in the shaft cover

It is the client's responsibility to ensure the standards-appropriate substructure, correct installation of the shaft and corresponding drainage. The shaft cover is not sealed against surface water.





**PICCOLINO 200 (C250)**



**Product features**

- Solid stainless steel construction, rust-free
- Completely maintenance-free (E-check)
- Cover made from non-slip steel floor plate
- Easy operation
- Can be walked on or driven over during operation
- Ground-flush installation
- Excellent operating safety thanks to reclosing after commissioning
- Locking is performed using a countersunk, cover-flush dual bit lock (1 key included in the scope of delivery)
- Cable exit opening in the cover lid for cables up to d=25mm

It is the client's responsibility to ensure the standards-appropriate substructure, correct installation of the shaft and corresponding drainage. The shaft cover is not sealed against surface water.

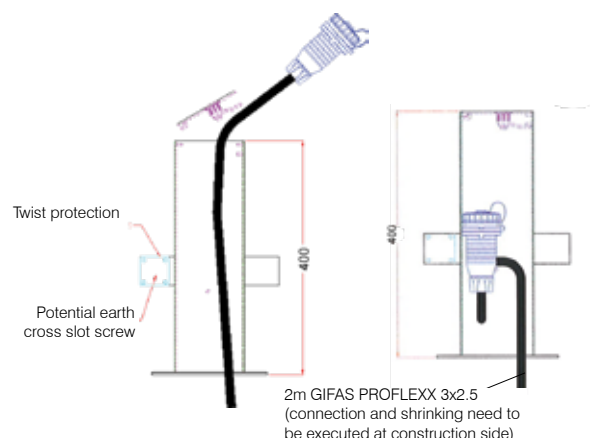
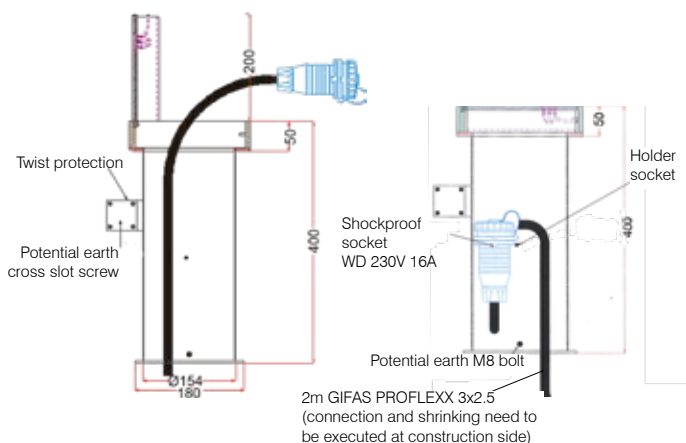
**PICCOLINO 120 (A15)**



**Product features**

- Solid stainless steel construction, rust-free
- Completely maintenance-free (E-check)
- Cover made from non-slip steel floor plate
- Easy operation
- Can be walked on or driven over during operation
- Ground-flush installation
- Excellent operating safety thanks to reclosing after commissioning
- Locking is performed using a countersunk, cover-flush dual bit lock (1 key included in the scope of delivery)
- Cable exit opening in the cover lid for cables up to d=15 mm

It is the client's responsibility to ensure the standards-appropriate substructure, correct installation of the shaft and corresponding drainage. The shaft cover is not sealed against surface water.



## Towns and municipalities - PIAZZA (D400)



Lübeck city hall market, PIAZZA with payment system



Place de la Constitution, Luxembourg, PIAZZA 1000



Kempen "Buttermarkt", PIAZZA 1000



Dresden "Altmarkt", PIAZZA 700



Quedlingburg market square, PIAZZA 1000



Quedlingburg market square, PIAZZA 1000



## Towns and municipalities - PIAZZA (D400)



Göttingen market place, PIAZZA 1000



"Kurhaus" Wiesbaden, PIAZZA 700



Münster warehouse district north, PIAZZA 700



Munich Residence, PIAZZA 700



"Dresdner Zwinger", PIAZZA 700

## Industry and leisure - PIAZZA (D400)



"Thyssen" Duisburg, PIAZZA 700



Old steel works "Belval", Luxembourg, PIAZZA 580



Port Marina Loitz, PIAZZA 700



Glasgow Sports Arena / Velodrome, PIAZZA 700



"SpOrt" Stuttgart, PIAZZA 580

## Airports - PIAZZA (F900)

**Country specific solution**  
PIAZZA 2000 ist specially designed for the German market!



Glasgow Bond Heliport, PIAZZA 2000



Glasgow Bond Heliport, PIAZZA 2000



Hangar, PIAZZA 2000



Hangar, PIAZZA 2000



Airport, Faeroe Islands, PIAZZA 2000



Katowice Airport, PIAZZA 2000

## Towns and municipalities - CAMPETTO (B125)



Lower Marsh Market, London, CAMPETTO VI



Kamp-Lintfort marketplace, CAMPETTO VIII



Pforzheim marketplace, CAMPETTO VI



Münster "Alter Steinweg", CAMPETTO VI



Kaarst marketplace, CAMPETTO VI



## Towns and municipalities - CAMPETTO (B125/A15)



“Buga” Coblenz, CAMPETTO VI and CAMPETTO VIII with submersible bell



Hampton Court Palace, CAMPETTO VI



Schriesheim city, CAMPETTO VIII



“Buga” Schwerin, CAMPETTO V (A15)



City Bitburg, CAMPETTO VI



City Brühl CAMPETTO VI

## Industry - CAMPETTO (B125)



“Nordfrost” Wilhelmshaven, CAMPETTO VI



CFL workshop, Luxembourg, CAMPETTO VI



“Daimler” presentation hall, CAMPETTO VI



“Melitta” Minden, CAMPETTO VI



“Max Planck” Institute, CAMPETTO VIII



Hamburg CruiseCenter, CAMPETTO VIII



## Leisure and airports - CAMPETTO (B125/A15)



St. Jacob park, Basel, CAMPETTO V (A15)



London Olympic Games, CAMPETTO VI



Frankfurt "Bretanobad", CAMPETTO VI installation



Duisburg "Tiger&Turtle", CAMPETTO V (A15) + CAMPETTO VI (B125)



Sea King military hangar, CAMPETTO VIII



Airport hangar, CAMPETTO VI

## RETRANT / PICCOLINO



Wiesbaden health resort, RETRANT



Neuzelle monastery, RETRANT



Residential building, PICCOLINO 200



Bremen "Wesercafé", RETRANT

## GIFAS live experience!

### How it works

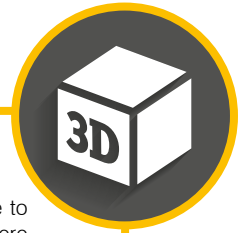
Download the GIFAS Augmented Reality App free for your smartphone or tablet. Then scan the picture that you can see below - the so-called marker - with the GIFAS app. You are now able to look at the product that you have selected from various angles and all sides. Enjoy your 3D tour!

### Instructions

The GIFAS app has been developed for use on modern tablets and smartphones using both Apple iOS and Android operating systems. Older devices and software may experience some limitations in their functionality. Due to the larger display size, the app's features are generally at their best on a tablet.

### Tip

If you need to place your tablet or smartphone very close to the marker for it to be detected, this may be because there isn't enough light. How it's done: First, point the camera at the marker at close range. Once the app has captured the marker and constructed the 3D model, you can slowly move the device away from the marker - up to a distance of 3 metres. Keep the phone or tablet as still as possible.



Download  
the GIFAS  
app here

## **WE ARE EXPERTS IN YOUR FIELD**

Construction industry

Industrial sector

Safety equipment

**Underfloor distributors**

**Online products available  
at [www.gifas.de/en](http://www.gifas.de/en)**

Find the suitable product  
solution for you on our  
website and read all the  
latest news about our  
products.

