



### POWER FOR ALL REQUIREMENTS.

Energy poles from GIFAS easily distribute the right amount of power, right where you need it. Our range of models blend into their environment seamlessly and harmoniously. They offer a reliable power supply whenever needed, tailored to your own specific requirements. Made in Germany.

Energy columns	122
Power bollards	126
Application cases	132

# Energy columns

## GAS 160



### Product features

- Suitable for indoor and outdoor use
- Closed aluminium profile
- Sturdy design, excellent stability
- Corrosion-free
- Surface impervious to dirt
- Individual equipment on all 4 sides
- Separator plate to separate various power circuits
- Customer-specific equipment
- All kinds of drilling patterns and use of single or multiple frames are possible
- Ceiling connection variant for vertical connection technology
- Can be equipped up to a height of 6m

### Technical data

Material	anodised aluminium
Fastening material V2A	
Protection category	IP54 = splashproof (with corresponding built-in elements)
Dimensions	160x110mm closed aluminium profile length as per the customer's wishes up to 6m
Equipment	as per the customer's wishes on all four sides
Colour	anodised silver other RAL colours available upon request
Terminal blocks	up to 16mm <sup>2</sup> 5-pole, L1, L2, L3, N, PE mounted on carrying rail system
Base plate included	4 fastening screws DIN 7991.M8.40.VA 4 brass dowels

### Possible connection combinations:

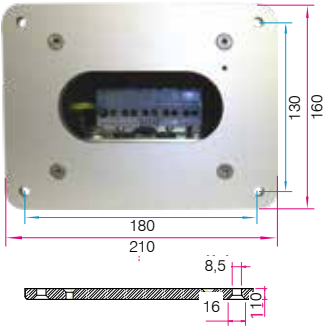
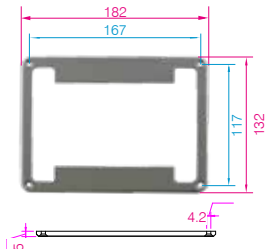
Electricity  
Compressed air  
Video, audio  
Data and telephone combinations  
Low-voltage combinations  
CEE surface-mounted sockets up to 63A etc.

### Supplied package

Aluminium column  
Base and cover plate  
Terminal block up to 16mm<sup>2</sup>  
Fastening screws for the standard device range  
Fastening screws for the base plate incl. dowel  
Also equipped as necessary (CEE built-in sockets, fuses, etc.)



Compressed air and data socket



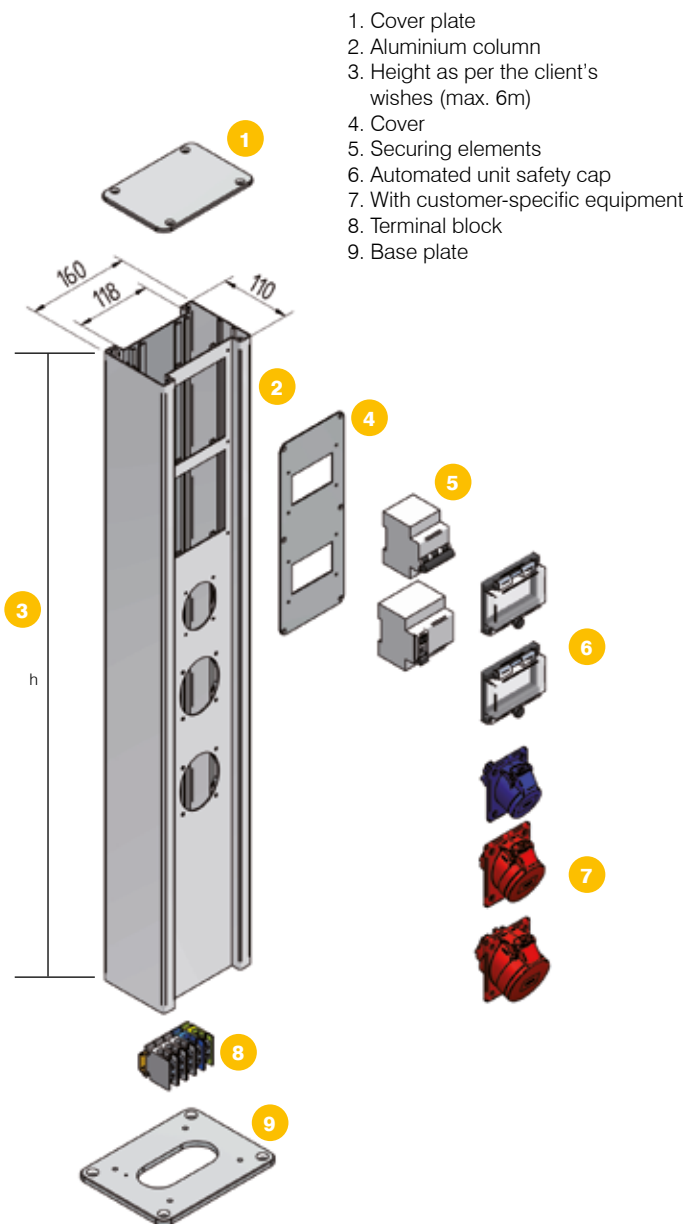
Base plate with fastening material

Cuff for double covers and double bases

Item no.	Series	Assembly examples
276895	GAS 160	2x protection plugs, 2x CEE 16A/400V, sockets without fuse protection, height 800mm
269720	GAS 160	2x protection plugs, 1x FI 25/0,03A, 1x data socket with 2x RJ45, height 550mm
319421	GAS 160	2x protection plugs, 2x LS 16A.1PB, 1x CEE 32A/400V, 1x LS 32A.3PC, 2x CEE 16A/400V, 2x LS 16A.3PC, 1x FI 63/0.03A type A for all sockets, height 1400mm

Other designs available upon request.

## GAS 160 structure



## GAS 160 LED



The ES luminaire head, made from satinised PMMA plastic, is included in the standard GIFAS ES 160 power column range. LED light in two colour variants (cold white and warm white). Pre-wired and ready for connection.

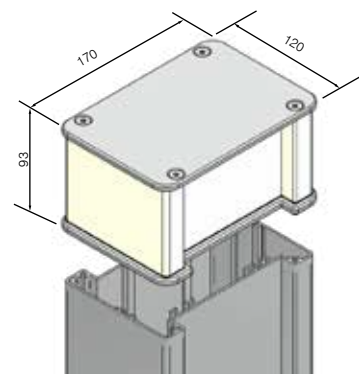
### Product features

- direct mains supply connection (no power supply unit needed)
- 360° light distribution
- can be used for the entire ES 160 range
- retrofit equipping possible
- 2 light colour variants available
- high light efficiency
- low power consumption
- long lifetime
- vibration-resistant
- immediate light output
- Light unit made from solid PMMA material, therefore extremely robust

### Technical data

Operating voltage	230VAC
Electric power supply	power supply
Illuminant	1×4.5W LED-Modul
Operating output	4.5W
Light output	84.4lm/W
Lighting current	380lm
Colour temperature (beam angle)	3-000K/4-200K
Protection category	IP54
Protection class	I (Protective conductor)
Temperature range operation	-20°C to +40°C
Dimensions (L×W×H)	170×120×93mm
Weight	1.9kg
Light unit material	PMMA satinised
Decorative feature material	aluminium anodised

Item no.	Description
860409	ES-LED luminaire head, cool white, for ES 160 alu column
860412	ES-LED luminaire head, warm white, for ES 160 alu column



# Energy columns

## GAS 230



The ES 230 (floor plate 330×250mm) omplements the existing assortment of the ES 160 (floor plate 210×160mm) and ES 100 (floor panel 130×80mm). It can be equipped on all four sides, and is distinguished by its very sturdy design.

The ES 230 is ideal for applications with many connections and various options, especially in industrial and operational facilities.

We also have several types of the ES 230, which are listed on the following pages. Due to the height of the columns, the equipments and specific solutions, we would be glad to work together with you.

### Product features

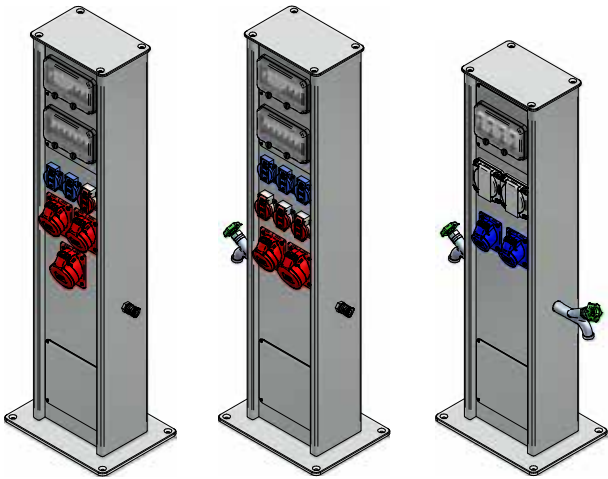
- Suitable for indoor and outdoor use
- Closed aluminium profile
- Sturdy design, excellent stability
- Corrosion-free
- Surface impervious to dirt
- Individual equipment on all 4 sides
- Separator plate to separate various power circuits
- Customer-specific equipment
- All kinds of drilling patterns and use of single or multiple frames are possible
- Ceiling connection variant for vertical connection technology
- Can be equipped up to a height of 6m

### Technical data

Material	anodised aluminium
	Fastening material V2A
Protection category	IP65 (with corresponding built-in elements)
Dimensions	230x150mm closed aluminium profile length as per the customer's wishes up to 6m
Equipment	as per the customer's wishes on all four sides
Colour	anodised silver other RAL colours available upon request
Terminal blocks	up to 70mm <sup>2</sup> 5-pole, L1, L2, L3, N, PE mounted on carrying rail system
Base plate included	4 fastening screws DIN 7991.M8.40.VA 4 brass dowels

### Possible connection combinations:

- Electricity
- Water
- Compressed air
- Video, audio
- Data and telephone combinations
- Low-voltage combinations
- CEE surface-mounted sockets up to 63A etc.



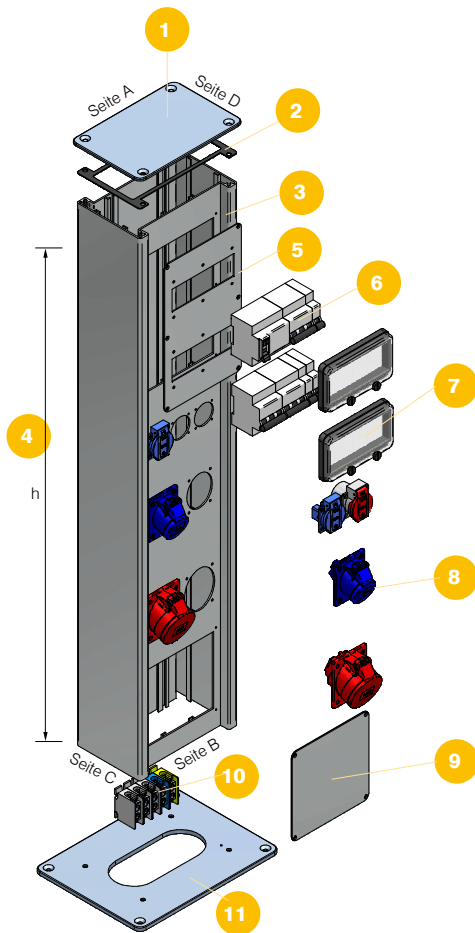
### Supplied package

- Aluminium column
- Base and cover plate
- Terminal block up to 70mm<sup>2</sup>
- Fastening screws for the standard device range
- Fastening screws for the base plate incl. dowel
- Also equipped as necessary (CEE built-in sockets, fuses, etc.)

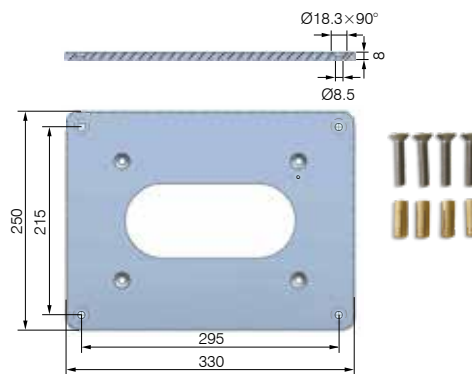
Item no.	Series	Assembly examples
318977	GAS 230	3x protection plugs, 3x LS 16A.1PB, 1x CEE 32A/400V, 1x LS 32A.3PC, 1x CEE 16A/400V, 1x LS 16A.3PC, 1x FI 40/0.03A type B for all sockets, height 1000mm
321017	GAS 230	4x Schuko, 1x CEE 32A/400V, 1x CEE 16A/400V, 2x compressed air connection 1/2", sockets without fuse protection, height 1000mm

Other designs available upon request.

### GAS 230 structure

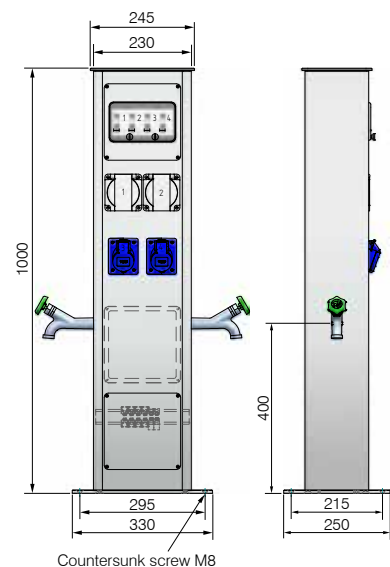
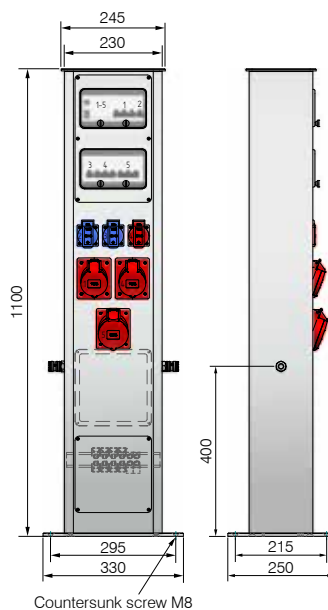
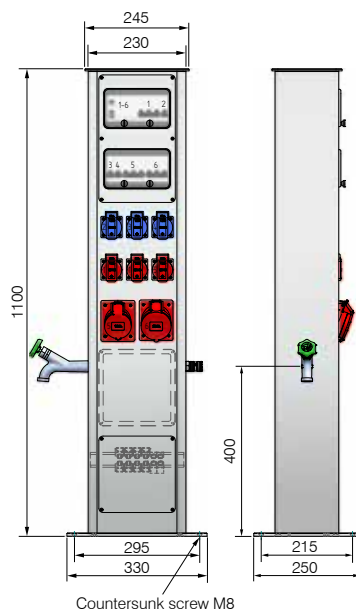


- 1 Ceiling panel
- 2 Gasket
- 3 Aluminium column
- 4 Height according to customer wishes (max. 5900 mm)
- 5 Cover
- 6 Fuse blocks
- 7 Self-closing protection flap
- 8 Customised equipment, e.g.
- 9 Service lid
- 10 Terminal block
- 11 Floor panel



Floor panel with attachment material

### Mounting examples





# Power bollards

## QUADRO

QUADRO – the clever solution. The QUADRO can be used for many outdoor applications and optically fits perfectly into the environment. QUADRO has perfect vandal-proof design, and thanks to the compact internal rubber distributor the column is also ideally suited to very rough environments.

Thanks to the flexible cable outlet flap, outside influences can also be reduced to a minimum during operation.

### Product features

- Modular configuration
- Three possible cover versions
- Various power distribution options
- Individual lock versions

### Technischal data power distributor 7400

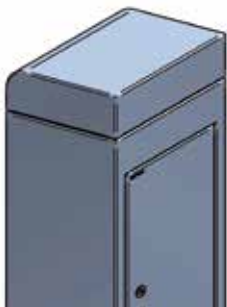
Protection category	IP54
Power supply	Built into column
Dimensions (WxHxD)	320x1100x320mm

### Technischal data power bollard

Protection category	IP65 with closed cable entry
Material	V4A stainless steel construction, optionally powder-coated
Attachment	Floor flange
Lock	Door lockable with cylinder lock / 4-sided
Dimensions (WxHxD)	320x1100x320mm



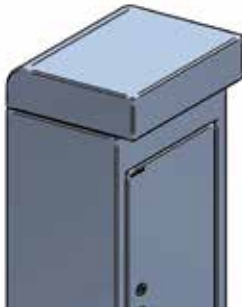
without lighting



diffuse lighting

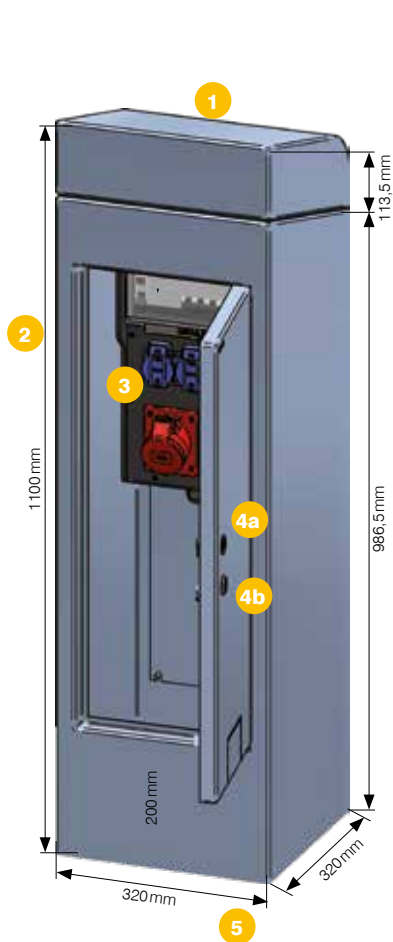


LED lighting  
(vertically directed downwards)

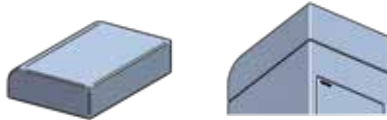


Item no.	Description	Locks	Equipment
on request	QUADRO without lighting	Cylinder lock / square	unequipped
on request	QUADRO without lighting	Cylinder lock / square	Distributor Series 7400, 3x safety plug, 1xCEE 16A/400V, 1xCEE 32A/400V
on request	QUADRO with diffuse lighting	Cylinder lock / square	Distributor Series 7400, 3x safety plug, 1xCEE 16A/400V, 1xCEE 32A/400V
on request	QUADRO with LED lighting	Cylinder lock / square	Distributor Series 7400, 3x safety plug, 1xCEE 16A/400V, 1xCEE 32A/400V
on request	Floor flange to QUADRO		

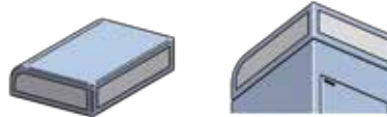
Other designs available upon request.



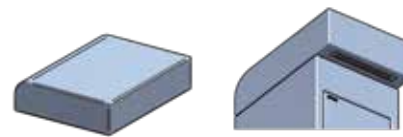
1 Cover module


**Cover module without lighting**

- Classic cover version
- Vandal-proof, sturdy, no maintenance

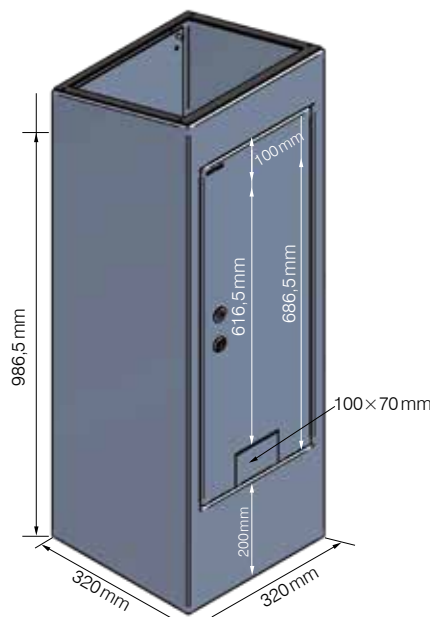

**Cover module with diffuse lighting**

- Illumination of QUADRO on three surrounding sides using muted light
- No glare, discreet illumination of environment


**Cover module with LED lighting**

- Lighting of front of QUADRO with latest LED lighting
- Power-saving, energy-conscious
- High visibility column

2 Column module



3 Power distributor 7400



4 Locking

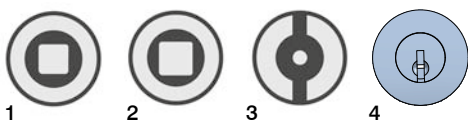
4a Top lock (e.g. cylinder lock)

4b Lower lock (e.g. square)

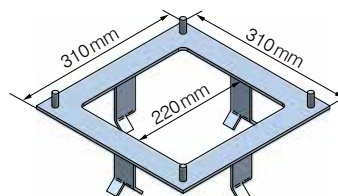


5 Floor flange

- Ideal for installation in solid base (e.g. concrete)
- Fast installation possible
- Easy levelling possible

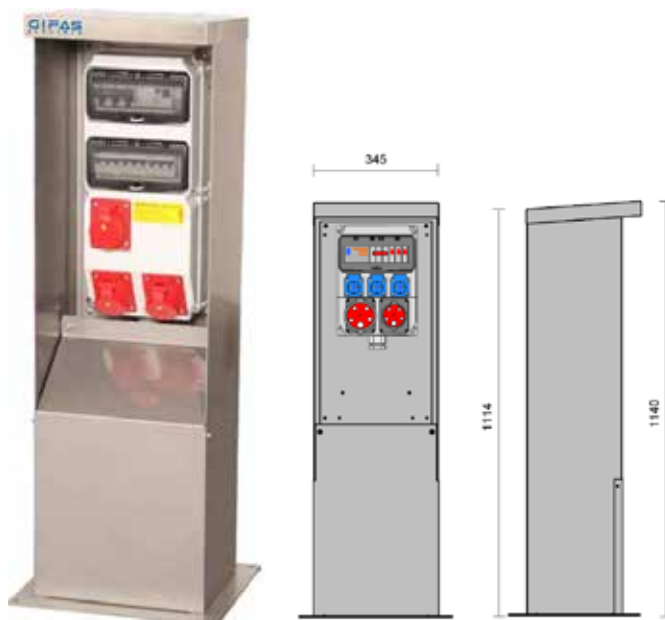
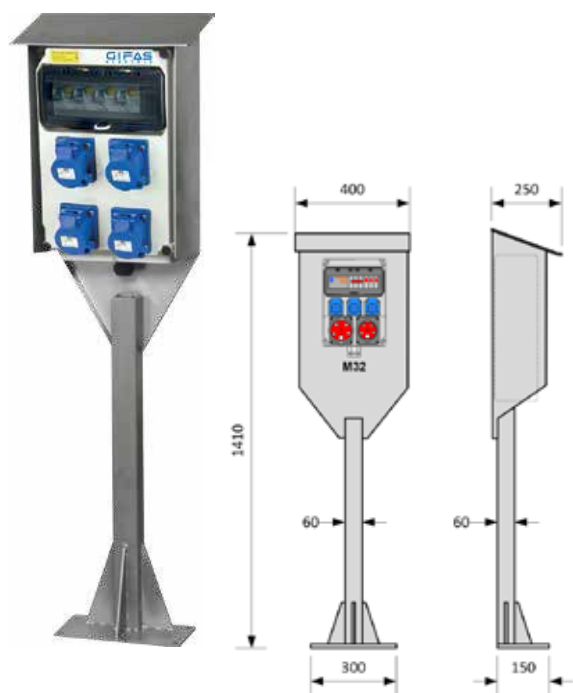


1. Square lock 6 mm
2. Square lock 8 mm
3. Double-bit lock
4. KABA 5000 type lock



# Power bollards

## MARINA



The energy bollards made of stainless steel are ideal for the outdoor area of industrial plants up to the port area. They provide all the necessary connections directly where they are needed and, thanks to the rustproof stainless steel housing, are particularly suitable for outdoor use.

### Product features

- Integrated: robust wall distributor made of plastic, alternatively wall distributor made of solid rubber with the desired equipment
- Integrated base with mounting holes for stability

### Technical data

Protection category	IP54
Material	V2A stainless steel
Material thickness	1,5 to 4mm

### Equipment example

3 CEE built-in socket 16 A 5P 400 V 6h IP44/54  
3 pre-fuses Neozed 32 A  
3 circuit breakers 3C 16 A  
1 residual current circuit breaker 4 / 40 / 0,03 A

### Optionally available

- Housing material made of V4A stainless steel
- Housing powder-coated in all common RAL colors
- IP66 / IP67

Other designs available upon request.



## NORDSEE



The NORDSEE power bollard can be used for various outdoor applications and blends in perfectly with its surroundings. The NORDSEE power bollard is safe from vandalism and, thanks to the compact internal solid rubber distributor, the column is ideally suited for harsh environments. The flexible cable outlet flap means that external influences can be reduced to a minimum, even during operation.

### Product features

- Sturdy stainless steel design
- Individual distributor equipment (solid rubber distributor) as per the customer's wishes
- Securing material installed under impact-resistant Macrolon cover
- Service door with cylinder lock

### Technical data for distributor 7900

Protection category	IP54
Power supply	built into the column
Dimensions (WxHxD)	360x500x173mm

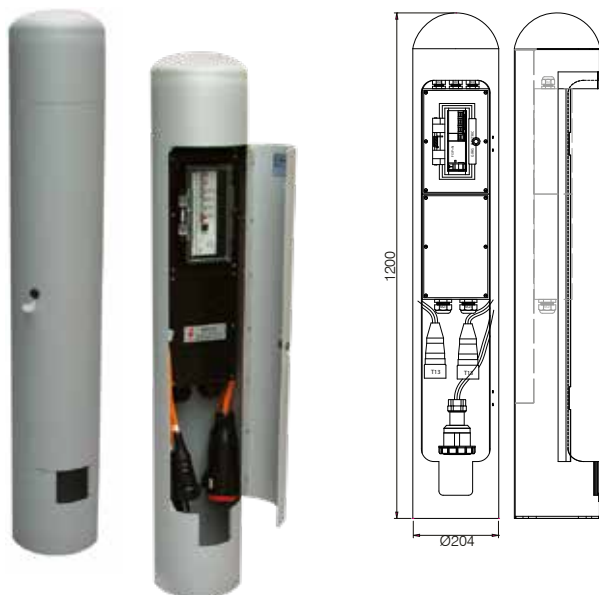
### Technical data for bollard

Protection category	IP65 with closed cable feed
Material	V4A stainless steel construction, powder-coated
Lock	lockable door with cylinder lock
Dimensions (WxHxD)	500x1500x450mm
Total weight	120kg

Item no.	Input	Output	Installations / design
278956	1 M63 cable gland 1 5-pole terminal block	1 CEE built-in socket 5x63A/400V 1 CEE built-in socket 5x32A/400V 1 CEE built-in sockets 5x16A/400V 3 230V protective contact sockets 1 63/0.03A fault-current circuit breaker	1 3/4" water connection with DVGW approval Protective devices located behind 1 transparent protective cap
272085	1 M32 cable gland 1 5-pole terminal block	1 CEE built-in socket 5x63A/400V 1 CEE built-in socket 5x32A/400V 2 CEE built-in sockets 5x16A/400V 6 230V protective contact sockets 1 63/0.03A fault-current circuit breaker	1 digital three-phase current meter Protective devices located behind 2 transparent protective caps

# Power bollards

## RONDO 200



Series 200

## RONDO 300



Series 300

The RONDO columns are lockable, can be custom-equipped and offer excellent protection against vandalism. When closed, energy is drawn via the cable outlet flap below the doors. A flange plate allows the column to be mounted on a base outlet and then connected to the grid. The RONDO column has a facility for the distributor housing in which the electrical distribution is integrated. Other connections (water, air, etc.) can also be integrated. Also useful as transit protection and route securing in combination with a secure and problem-free energy supply.

### Product features

- Customised distributor equipment (solid rubber distributor) as per the customer's wishes, technical specifications and requirements
- Securing material installed under impact-resistant Macrolon cover
- Excellent operating safety and protection against unauthorised access and vandalism

### Technical data

#### Dimensions

Ø=204xH=1200mm RONDO 200

Ø=324xH=1158mm RONDO 300

#### Weight

approx. 25kg RONDO 200

approx. 55kg RONDO 300

#### Housing material

V2A stainless steel construction

#### Coating

Powder-coated or polished natural

#### Colour

available in all RAL colours

#### Power supply

built into the bollard

#### Max. CEE

32A

#### Max. Fuse protection

80A

#### Max. Access

max. Ø36 mm

Lock Door can be locked with a cylinder lock

### Available upon request

- RONDO with a diameter of 500mm

Item no.	Description	Input	Output	Installations / design
248539	RONDO 200 RAL 9007 grey aluminium	1 M40 cable gland 1 5-pole terminal block	1 CEE connector 5x32A/400V 2 230V protective contact plug connectors 1 63/0.03A fault-current circuit breaker	Protective devices located behind 1 transparent protective cap
338450	RONDO 300 RAL 6028 Stainless steel, polished	2 M40 cable glands 1 10-pole terminal block	2 CEE built-in sockets 5x32A/400V 2 230V protective contact sockets 1 63/0.03A fault-current circuit breaker	1 3/4" water connection with ball cock Protective devices located behind 1 transparent protective cap 1x 3-square (8 mm) sash lock
338451	RONDO 300 RAL 9007 grey aluminium	2 M40 cable glands 1 5-pole terminal block	1 CEE built-in socket 5x32A/400V 1 CEE built-in socket 5x16A/400V 2 230V protective contact sockets 1 63/0.03A fault-current circuit breaker 1 40/0.03A fault-current circuit breaker	1x water supply connection 3/4" with ball shut-off valve 1x LS switch 6 A, 1-pole in B characteristic for the heating tape as frost protection for the water connection Protective devices behind 2 transparent arranged behind 2 transparent protective flaps 1x 3-square (8 mm) sash lock

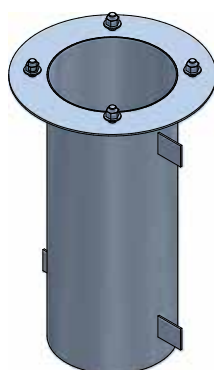
Other designs available upon request.

## Floor mounting part

## Technical drawing of floor installation part for RONDO 200 / 300



RONDO 200



RONDO 300

### Customised solutions are our strength!

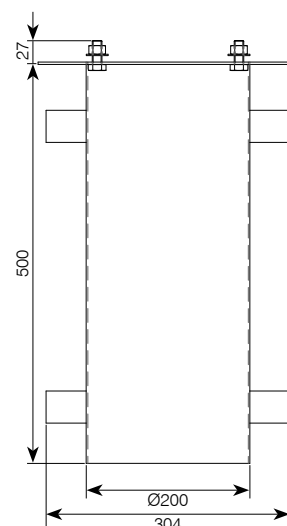
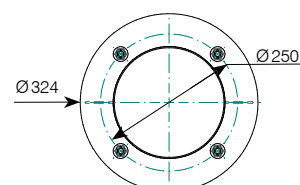
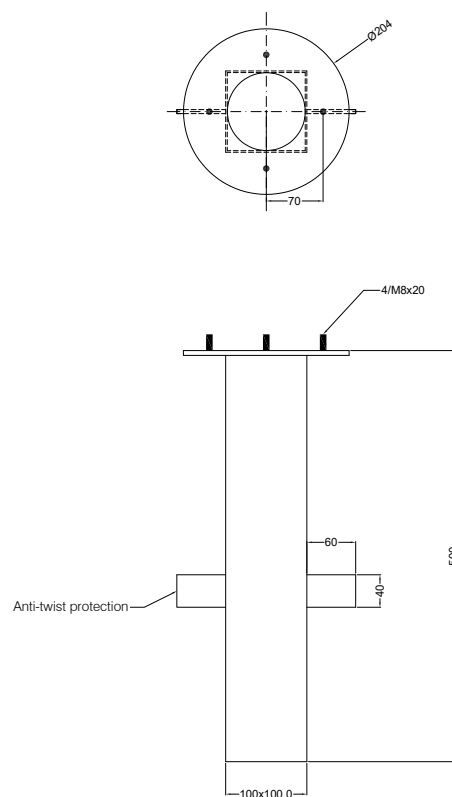
Plan the optimum design for your area of application with our technicians.

### Floor mounting part

The ground installation part with anti-twist protection is used when no concrete base is available on site for bollard installation. The excavation work as well as the professional and standardised installation of the installation of the bollard base installation part are carried out on site.

### Water and waste water connection

A water supply pipe with ball valve and hose connection piece as well as a mineral-reinforced, hot water-resistant DN50 waste water drainage pipe are optionally available in the floor installation part. The water connection with ball valve and the waste water connection must be provided by the customer (frost protection device for water connection possible as an option).



Item no.	Description
246379	Floor installation part for RONDO 200 HxD 500x204
338449	Floor installation part for RONDO 300 HxD 500x304

## RONDO / NORDSEE / QUADRO





## RONDO / RETRACTABLE BOLLARDS





# WE ARE **EXPERTS** IN YOUR FIELD

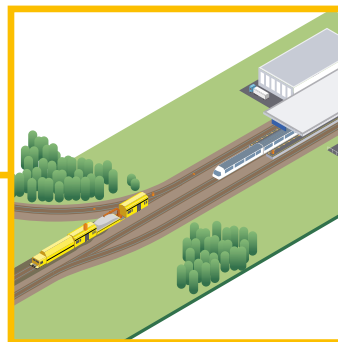
**Energy columns /  
Power bollards**



Public sector



Industrial sector



Safety equipment

**THE GIFAS WORLD.**

**All products for your sector at a glance.**

**More on [www.gifas.de/en/gifas-world](http://www.gifas.de/en/gifas-world)**