



PERFECT VISIBILITY ANYWHERE, ANYTIME.

Linear lights are used in particular for homogeneous lighting of large rooms and halls. With good light quality and simple and quick installation, the GIFAS lights cover a wide range of applications - reliably any time.

BetaLUXX ceiling light	220
Protected tube light	221
Moisture-proof lamp	224
Application cases	225

BetaLUXX LED ceiling light



End cap



Assembly clip



The BetaLUXX LED ceiling light is extremely sturdy and has a high protection category of IP66. The assembly clips simplify the installation process. The BetaLUXX is versatile in industry and other harsh environments.

Product features

- Even light distribution
- Low glare effect thanks to satin-finish cover
- Simple direct mounting via stainless spring steel assembly clip (1.4310), included in delivery
- Low energy consumption with a high light yield
- 5-year warranty!



Technical data

Input voltage	100-277 VAC
Light source	LED
System power	20W / 35W / 55W
Luminous flux	1964lm / 3929lm / 6574lm
LED efficiency	98.2lm/W / 112lm/W / 120lm/W
Light colour	5.000K
Beam angle	120°
CRI (colour reproduction index)	Ra >80
Service life	>50000h
Protection category	IP66
Protection class	II
Operation range of temperature	-20° C to +40° C
Housing	Aluminium, grey
Cover	Plastic
Shock resistance	IK10
Weight	approx. 1.2kg / 2.0kg / 2.9kg
Dimensions (LxWxH)	570x69x59mm / 1046x69x59mm / 1524x69x59mm

D rating as per VDE 0711-2-24 or EN 60598-2-24

Item no. 3000K	Item no. 4000K	Item no. 5000K	Description
860627	860626	860616	BetaLUXX 20 230 VAC, 1964 lm
860628	860614	860470	BetaLUXX 40 230 VAC, 3929 lm
860629	860615	860480	BetaLUXX 60 230 VAC, 6574 lm

Accessories / spare parts

292000	Cable connector 2-polig 17.5A, 250VAC, ø 7-12 mm, IP68*
292001	Cable socket 2-polig, 17.5A, 250VAC, ø 7 - 12 mm, IP68*

*essential accessory

StreamLED POWER Protected tube light



The powerful and energy-efficient LED tubes in modern design are particularly suitable for workshops, large-scale operations, shops, warehouses, supermarkets, cold shops, hospitals, doctors surgeries, museums, etc. In contrast to conventional fluorescent tubes, the latest generation of LED tubes emit light bundled at a defined beam angle of 120° without annoying flickering and flickering.

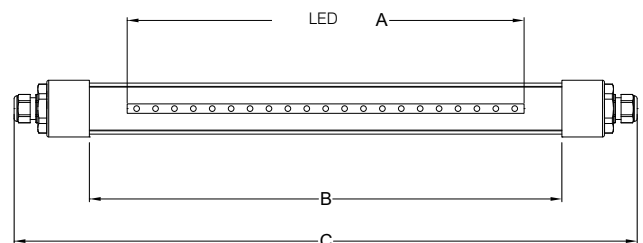
Product features

- Through-wiring for chain light
- Connection via cable gland M20 (for cable with \varnothing 7-14 mm)
- Can be used indoors and outdoors
- Low energy consumption with high luminous efficacy
- Full luminous flux is available immediately
- Minimal temperature development
- Constant luminosity independent of outdoor temperature
- Extremely switch-resistant (> 1 million)
- Maintenance-free
- Insensitive to shock and vibration
- Unbreakable (work protection)
- No UV/IR radiation

Technical data

Input voltage	230 VAC, 9-36 VDC
Light source	LED stripes
System power	6W / 12W / 13,5W / 27W
Luminous flux	934lm / 1371lm / 1959lm / 3723lm
Light colour	6.500K
Beam angle	120°
Protection category	IP68 / IP69
Protection class	I
Shock resistance	IK10
Operation range of temperature	-30 to +50 °C
Housing	Acrylic glass shock-resistant
Dimensions Ø	54mm

Item no.	Voltage	Power	Luminous flux	A mm	B mm	C mm
840660	230 VAC	6W	934lm	437	500	660
840663	230 VAC	12W	1371lm	875	920	1080
840661	230 VAC	13,5W	1959lm	437	500	660
840664	230 VAC	27W	3723lm	875	920	1080
840680	9-36 VDC	6W	934lm	437	500	660
840678	9-36 VDC	12W	1371lm	875	920	1080
840679	9-36 VDC	13,5W	1959lm	437	500	660
840964	9-36 VDC	27W	3723lm	875	920	1080



Industrial lighting

StreamLED 2 SL70 Protected tube light



The StreamLED 2 is the answer to the market trend away from classic LED tubes to fitted LED modules. It has a high luminous efficacy with greatly reduced failure frequency. Glare is minimised by a satinised special tube - further features are the high protection category (IP66) and the compact design.

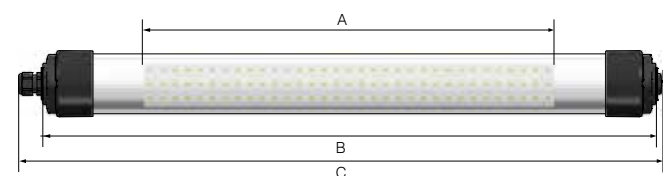
Product features

- High efficiency and uniformity of light
- Robust and impact resistant
- Energy-saving
- Easy to install
- Suitable for use in the harshest environments (tunnels, sewage treatment plants, water reservoirs, chemical industry)
- Design for direct connection via cable glands
- Through-wiring 2x2.5mm² possible for all models

Technical data

Input voltage	198-264 VAC (176-264 VDC)
System power	20 W/35 W/55 W
Luminous flux	2121 lm/4245 lm/7102 lm
LED efficiency	106 lm/W/121 lm/W/129 lm/W
CRI	Ra >80
Service life	>50000 h [L70/B10]
Protection category	IP66
Shock resistance	IK10
Protection class	II
Operation range of temperature	-25°C to +40°C
Light colour	4000K/5000K (3000K on request)
Beam angle LED	120°
Housing	PMMA
Cover	Cover caps anthracite RAL7016 / tube transparent matt (satin finish)
Dimensions Ø	70mm

Item no.	Power	Light colour	Voltage	A mm	B mm	C mm
860666	20 W	4000 K	230 VAC	479	719	751
860667	20 W	5000 K	230 VAC	479	719	751
860668	35 W	4000 K	230 VAC	958	1198	1230
860669	35 W	5000 K	230 VAC	958	1198	1230
860670	55 W	4000 K	230 VAC	1437	1677	1709
860671	55 W	5000 K	230 VAC	1437	1677	1709



StreamLED 2 SL50 Protected tube light



LED protective tube luminaire for use in machine tools and working areas where both a high degree of sealing against penetrating liquids and a special robustness of the housing are required (IP68).

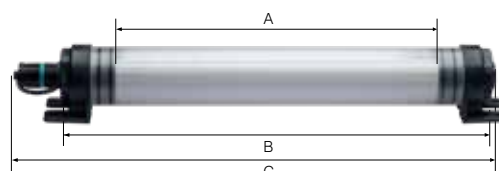
Product features

- high efficiency and uniformity of light
- robust and impact resistant
- energy-saving
- easy to mount
- suitable for use in the harshest environments (tunnel area, sewage treatment plants, water reservoirs, chemical industry)
- design for direct connection via cable glands
- through-wiring 2x2.5mm² possible for all models

Technical data

System power	12W/24/36W/48W
Luminous flux	2300lm/4600lm/6900lm/9200lm
CRI	Ra >80
Service life	>60000 h [L80 B10]
Protection category	IP68
Shock resistance	IK10
Protection class	II
Operation range of temperature	-25°C to +35°C
Light colour	4000K (5700K on request)
Beam angle LED	180°
Housing	PMMA
	Borosilicate glass tube (on request)
Dimensions Ø	54mm

Item no.	Voltage	Power	Lumen	A mm	B mm	C mm
871000	24VAC/DC	12W	2300	250	415	490
871001	24VAC/DC	24W	4600	500	665	740
871002	24VAC/DC	36W	6900	750	935	1010
871003	24VAC/DC	48W	9200	1000	1185	1260
871004	48VAC/DC	12W	2300	250	415	490
871005	48VAC/DC	24W	4600	500	665	740
871006	48VAC/DC	36W	6900	750	915	1010
871007	48VAC/DC	48W	9200	1000	1185	1260
871008	230VAC	12W	2300	250	465	540
871009	230VAC	24W	4600	500	665	740
871010	230VAC	36W	6900	750	915	1010
871011	230VAC	48W	9200	1000	1185	1260



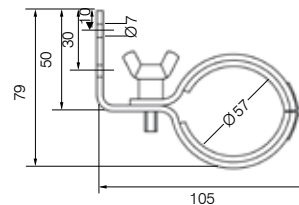
Protected tube lights Accessories



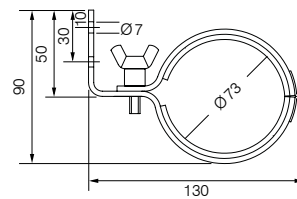
Accessories / Spare parts

840082	Wall bracket SL Power, Edelstahl V4A*
840083	Wall bracket SL70 Typ 1, Edelstahl V4A*
840084	Wall bracket SL70 Typ 2, Edelstahl V4A*
840085	Wall bracket SL70 Typ 3, Edelstahl V4A*
282491	Assembly key

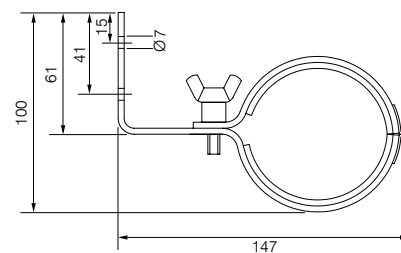
*2 x per light



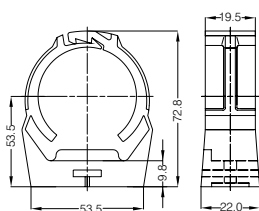
Wall bracket SL50+ SL Power, Item no. 840082



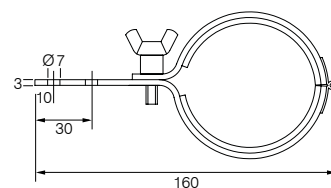
Wall bracket SL70 type 1, Item no. 840083



Wall bracket SL70 type 2, Item no. 840084



Wall bracket SL POWER, Item no. 282492



Wall bracket SL70 type 3, Item no. 840085



LineLED PRO 3 Moisture-proof diffuser luminaire



Endkappe



Montageclip



Emergency
light 1h



The LineLED PRO 3 is the moisture-proof diffuser luminaire for demanding applications in industrial plants, underground garages and in cooling and storage areas. An impact-resistant and satinised cover made of polycarbonate (PC) minimises glare and ensures uniform light distribution with high visual comfort. The high protection class IP65 protects the luminaire against the ingress of dirt and water. The mounting material is included in the scope of delivery. All versions are designed for 5x2.5mm² through-wiring as standard. The cable gland is suitable for cables with an outer diameter of 5 to 12mm.

Product features

- Full luminous flux, available immediately
- low energy consumption with high luminous efficacy
- impact-resistant cover (IK08)
- high energy efficiency
- maintenance-free
- stainless steel fasteners and fixings
- no UV/IR radiation
- incl. 5x2.5mm² through-wiring
- emergency light battery:
 - LiFePO4 battery 6.4V
 - Emergency light up to 1h at 10% light output

Technical data

Input voltage	220-240VAC
Light source	LED
System power	24W / 36W / 50W / 65W
Luminous flux	3000lm / 4500lm / 6250lm / 8125lm
LED efficiency	125 lm/W
Light colour	5000K
CRI	Ra >80
Beam angle	120°
Service life	50000h [L70/B30]
Protection category	IP65
Protection class	I
Shock resistance	IK08
Operation range of temperature	-15°C to +35°C
Housing	GFK
Cover	PC matt
Weight	approx.: 1.6kg / 2.8kg / 3.9kg
Dimensions (LxWxH)	600x100x123mm 1200x100x123mm 1500x100x123mm

Item no.	Description
293954	LineLED PRO3/W24V230/600mm/DV5X2,5/-
293955	LineLED PRO3/W36V230/1200mm/DV5X2,5/-
293956	LineLED PRO3/W50V230/1500mm/DV5X2,5/-
293957	LineLED PRO3/W65V230/1500mm/DV5X2,5/-

Item no.	Version with emergency light function
298461	LineLED PRO3/W65V230/1500mm/DV5X2,5/ LiFePO4 battery 1h/10%

Max. Number of luminaires per circuit breaker			
LineLED PRO3	Circuit breaker		
	B16A	C16A	B20A
LineLED-PRO3/W24	32 pcs	60 pcs	40 pcs
LineLED-PRO3/W36	32 pcs	60 pcs	40 pcs
LineLED-PRO3/W50	23 pcs	38 pcs	28 pcs
LineLED-PRO3/W65	17 pcs	30 pcs	21 pcs

Ceiling lights / protective tube lights



Illumination of underground car park



Workshop lighting



Tunnel lighting



Machine lighting in the food industry



Inspection shaft lighting



Car wash cabin illumination

Ceiling lights / protective tube lights



Maintenance dock lighting, food industry



Path lighting underpass



Illumination ice grotto



Underground car park lighting

Ceiling lights / protective tube lights



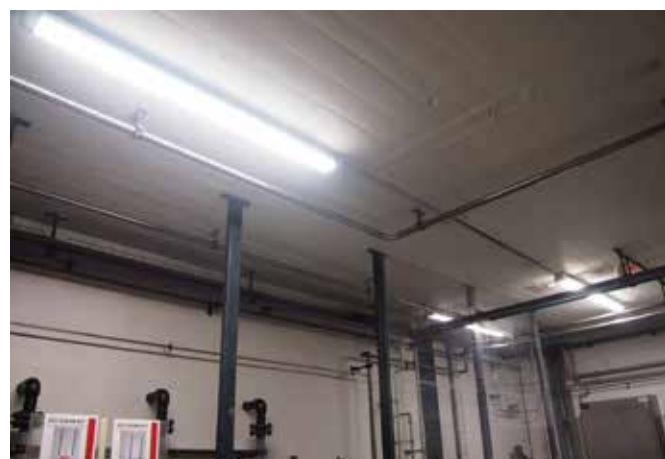
Illumination pool



Parking garage lighting



Illumination tunnel



Workplace lighting



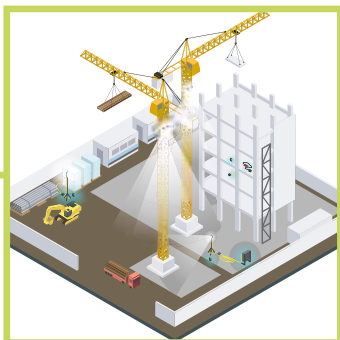
Factory lighting



Illumination maintenance system

WE ARE **EXPERTS** IN YOUR FIELD

Industrial lighting



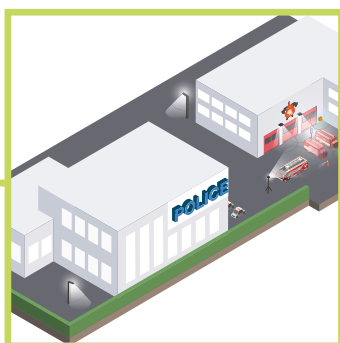
Construction industry



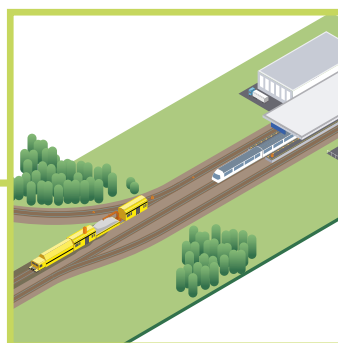
Public sector



Industrial sector



Safety equipment



Transportation

THE GIFAS WORLD.

All products for your sector at a glance.

More on www.gifas.de/en/gifas-world